

TT 625
. L72



ILLUSTRATED CATALOGUE

No. 44

LATEST REGULATION AND NEWEST STYLES

UNIFORMS
CAPS
SHIRTS
HELMETS
BADGES

FIRE DEP'T SUPPLIES

BANNERS
FLAGS
INSIGNIAS
BUTTONS
ETC. ETC.

MANUFACTURED

IN THE

FACTORIES OF

THE M. C. LILLEY & CO.

COLUMBUS, OHIO.



COPYRIGHT

TERMS AND CONDITIONS.

TERMS: All articles in this price list (No. 44) are subject to liberal cash discount, except where specified "Net."

All goods are shipped C. O. D., privilege of examination, unless other terms of payment have been agreed upon.

Where uniforms are desired on "monthly payments," we will make special arrangements.

Orders amounting to less than \$5.00 should be accompanied with the amount.

All goods shipped by express, unless otherwise ordered; and, if by freight, are sent at risk of party ordering.

SAMPLES: Where a Company or Department desires samples of Uniforms or Equipments, we will submit made-up samples and our best proposition; provided, that such samples are ordered officially with seal attached, or by some responsible business firm. All samples to be returned in good condition, and party ordering samples must pay *express charges both ways*, unless samples are kept and remitted for.

In ordering samples, please state number of uniforms wanted in first order, and how soon order will be placed.

Samples of our uniform cloths, all colors, and shirt flannels, are sent upon request, *free of charge*.

GUARANTEES: At all times we warrant every article to be strictly as represented.

Satisfactory fitting uniforms are guaranteed, according to measures furnished us.

In every instance we guarantee our goods to be free from flaws and imperfections, and to give entire satisfaction.

SPECIAL: For the FIRE FIGHTERS of America, we aim to manufacture only articles of *Sterling Merit*, both as to quality and practicability.

We will make any article of equipment to conform to the regulation adopted by any Company or Department. For any article not found in this list, write us, state your wishes and we will cheerfully furnish full information on the desired goods.

Courteously yours,

THE M. C. LILLEY & CO.

(See view of Factory on cover.)

Columbus, Ohio.

Established 1865.

PRICE LIST NO. 44.

Descriptive and Illustrated
PRICE LIST
OF
FIREMEN UNIFORMS

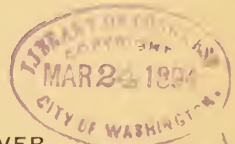
Equipments and Supplies,

MANUFACTURED BY

THE M. C. LILLEY & Co.,

COLUMBUS, OHIO.

FOR TERMS SEE INSIDE FRONT COVER.



ENTERED ACCORDING TO ACT OF CONGRESS, IN THE YEAR 1893, BY
THE M. C. LILLEY & CO.,
COLUMBUS, OHIO,
IN THE OFFICE OF THE LIBRARIAN OF CONGRESS, AT WASHINGTON, D. C.

WARNING—All infringements of above copyright will be promptly prosecuted.

Description of a Model Factory.

The Hon. Wm. Z. McDonald, Chief Inspector of Workshops and Factories of the State of Ohio, in his Eighth Annual Report for 1891, says :

“ Before closing under this chapter, I desire, as a matter of instruction to builders of factories, to explain the construction of what I consider THE MODEL FACTORY OF OHIO—which is the plant of The M. C. Lilley Company, of Columbus, Ohio, manufacturers of military and society goods. It has been the aim of this company to build perfect, so far as possible, from a hygienic standpoint, and they have neither spared time nor expense to accomplish this desire. The entire plant consists of three brick buildings, with boiler-room and engine-room attached. The main building is five stories in height, and occupies a space of 114x130 feet. It is built of dark pressed brick and brown stone trimmings. The two additional buildings are four stories in height, and cover practically the same area as the main building. The entire construction is after the plans formulated by the Hon. Edward Atkinson, of Boston, Mass., which is known as the slow-burning process, which has made that gentleman's name famous among architects, as having formulated the only construction suitable for factory and mill purposes capable (from a practical standpoint) of resisting fire. This plant, however, contains many new features which are very commendable, the result of much expensive investigation and the ideas of their Vice-President, Mr. John Siebert, which I believe will inure to the great benefit of those building for factory purposes in the future. The exterior appearance (which is shown by cut on the cover of this catalogue) indicates that of a beautiful architectural design, and shows much in that direction to be admired.”

A cordial invitation is extended to all Firemen visiting this city to call and inspect a modern factory, capable of resisting Fire, and see how uniforms and equipments are made.

THE M. C. LILLEY & CO.



STYLE F. 1.

STYLE F. 1. The standard style for members. A single-breasted, close fitting sack coat, square corners at bottom, made of dark blue or grey cloth, pure indigo dye; cut to button close to the neck, turned down collar, with square corners, 6 large size regulation nickel F. D. Buttons sewed on breast, 3 small regulation nickel F. D. Buttons sewed on each sleeve, the collar, sleeves, front and bottom edges silk stitched. Silk button-holes, 2 inside pockets, lined, made to individual measure.

Regulation gold-plated buttons, in place of nickel, without extra charge for officers. Outside pockets no extra charge when ordered.

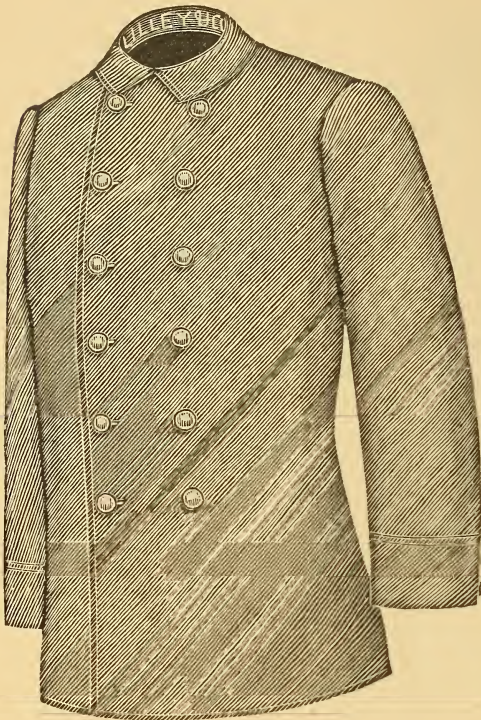
Half inch wide black mohair braid can be added on edges of coat at a slight advance in cost.

Samples of our cloths cheerfully sent upon application. Write for

measure blanks and our perfected rules for self measuring. Satisfactory Fitting Uniform is guaranteed to every purchaser.

STYLE F-1.		COAT	PANTS	
Made of	No.		Without Stripes Plain Side Seams	With Stripes At Side Seams
	17	Dark Blue Cloth	.6 80	.4 80
"	25	" "	.7 60	.5 50
"	34	" "	.8 10	.5 90
"	170	" "	.9 65	.7 55
"	22	" "	.10 10	.7 90
"	32	" "	.11 65	.8 95
"	8025	" "	.11 65	.8 95
"	4	" "	.12 45	.9 70
"	35	" "	.14 00	.11 70
"	100	" "	.14 80	.12 60
"	10	" "	.20 90	.15 50
"	238	Gray Cloth	.8 20	.6 00
"	8	" "	.9 00	.7 05
"	1238	" "	.11 65	.8 95
"	181	" "	.12 45	.9 70
"	314	" "	.12 45	.9 70
"	33	Light Blue Cloth	.8 10	.5 90
"	3	" "	.9 65	.7 50
"	110	" "	.10 40	.8 10
"	841	" "	.12 45	.9 70
"	A	Black Cloth	.8 50	.6 20
"	B	" "	.9 50	.7 30
"	C	" "	.10 00	.7 60
"	28	Dark Green Cloth	.10 10	.7 90
"	29	" "	.11 65	.8 95
"		Drab or Brown Cloth	.8 10	.5 90
"		" "	.10 10	.7 90

These Prices Subject to Cash Discount.



STYLE F. 2.

STYLE F. 2. The standard style for officers. A double-breasted, close fitting sack coat, square corners at bottom, made of dark blue or grey cloth, pure indigo dye; cut to button close to the neck, turned down collar with square corners, 12 large size gold plated (or nickel) regulation F. D. Buttons, sewed on breast in 2 rows of 6 each, 3 small gold-plated (or nickel) regulation F. D. Buttons sewed on each sleeve; Collar, sleeves, front and bottom edges silk stitched; silk button-holes; 2 inside pockets, lined, made to individual measure. Outside pockets no extra charge when ordered.

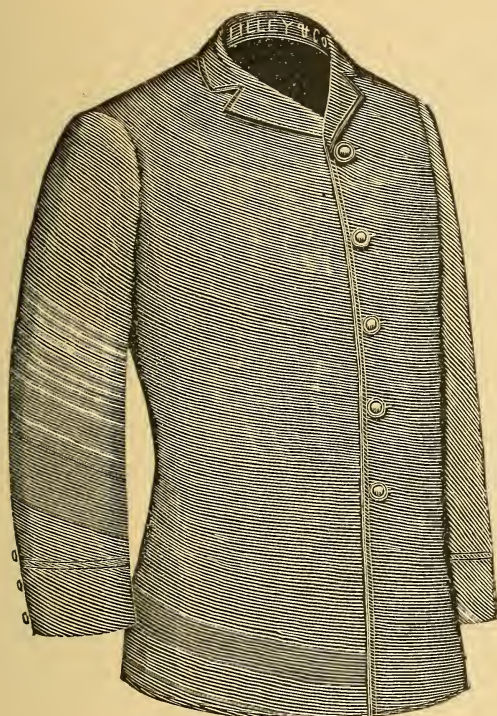
Half inch wide black mohair braid can be added on edges of coat at a slight advance in cost.

Samples of our cloths cheerfully sent upon application. Write for

measure blanks and our perfected rules for self measuring. Satisfactory Fitting Uniform is guaranteed to every purchaser.

STYLE F-2.	COAT	PANTS	
		Without Stripes Plain Side Seams	With Stripes at Side Seams
Made of No. 17 Dark Blue Cloth	8 55	4 80	5 40
" " 25 " " " "	9 25	5 50	6 15
" " 34 " " " "	9 80	5 90	6 50
" " 170 " " " "	11 50	7 55	8 05
" " 22 " " " "	12 05	7 90	8 55
" " 32 " " " "	13 40	8 95	9 60
" " 8025 " " " "	13 40	8 95	9 60
" " 4 " " " " "	14 90	9 70	10 30
" " 35 " " " "	16 60	11 70	12 35
" " 100 " " " "	17 45	12 60	13 20
" " 10 " " " "	23 90	15 50	17 15
" " 238 Gray Cloth	10 00	6 00	6 65
" " 8 " " " "	10 90	7 05	7 60
" " 1238 " " " "	10 40	8 95	9 60
" " 181 " " " "	14 90	9 70	10 30
" " 314 " " " "	14 90	9 70	10 30
" " 36 Light Blue Cloth	9 80	5 90	6 50
" " 3 " " " " "	11 50	7 50	8 05
" " 440 " " " "	12 25	8 10	8 70
" " 841 " " " "	14 90	9 70	10 30
" " A Black Cloth	10 25	6 20	6 80
" " B " " " " "	11 35	7 30	7 95
" " C " " " " "	11 70	7 60	8 20
" " 28 Dark Green Cloth	12 05	7 90	8 55
" " 29 " " " "	13 40	8 95	9 60
" " Drab or Brown Cloth	9 80	5 90	6 50
" " " " " "	12 05	7 90	8 55

These Prices Subject to Cash Discount.



STYLE F. 3.

measuring. Satisfactory Fitting Uniform is guaranteed to every purchaser.

STYLE F-3. A single-breasted, close fitting sack coat, made of dark blue or gray cloth, pure indigo dye; square corners at bottom, rolling collar with lapels; 5 large size regulation nickel F. D. Buttons sewed on front edge, 3 small nickel F. D. Buttons sewed on each sleeve. Collar, sleeves, front and bottom edges silk stitched; Silk Button-holes. 2 inside pockets, lined, made to individual measure.

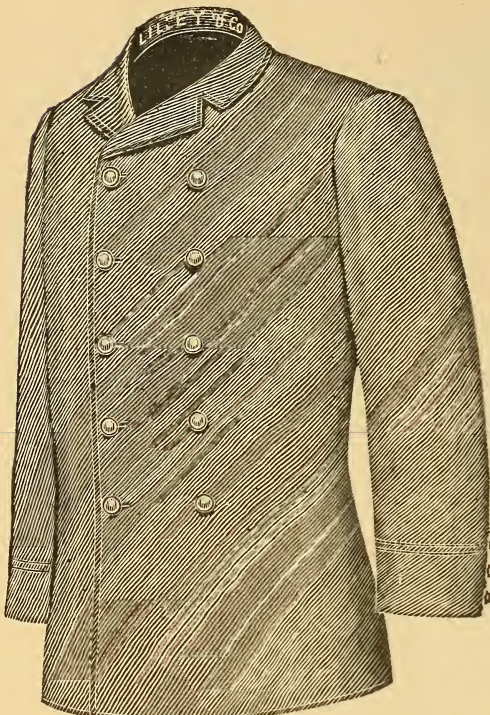
Regulation gold-plated buttons, in place of nickel, without extra charge for officers. Outside pockets no extra charge when so ordered.

Half inch wide black mohair braid can be added on edges of coat at a slight advance in cost.

Samples of our cloths cheerfully sent upon application. Write for measure blanks and our perfected rules for self-

STYLE F-3.		COAT	PANTS	
Made of No.	Material		Without Stripes Plain Side Seams	With Stripes at Side Seams
17	Dark Blue Cloth	9 15	4 80	5 40
25	" "	10 00	5 50	6 15
34	" "	10 40	5 90	6 50
170	" "	12 10	7 55	8 05
22	" "	12 75	7 90	8 55
32	" "	14 45	8 95	9 60
8025	" "	14 45	8 95	9 60
4	" "	15 30	9 70	10 30
35	" "	17 60	11 70	12 35
100	" "	18 45	12 60	13 20
10	" "	23 75	15 50	17 15
238	Gray Cloth	10 60	6 00	6 65
8	" "	11 50	7 05	7 60
1238	" "	14 45	8 95	9 60
181-314	" "	15 30	9 70	10 30
36	Light Blue Cloth	10 40	5 90	6 50
3	" "	12 10	7 50	8 05
440	" "	12 95	8 10	8 70
841	" "	15 30	9 70	10 30
A	Black Cloth	10 80	6 20	6 80
B	" "	11 90	7 30	7 95
C	" "	12 25	7 60	8 20
28	Green Cloth	12 75	7 90	8 55
29	" "	14 45	8 95	9 60
	Drab or Brown Cloth	10 40	5 90	6 50
	" "	12 75	7 90	8 55

These Prices Subject to Cash Discount.



STYLE F. 4.

Satisfactory Fitting Uniform is guaranteed to every purchaser.

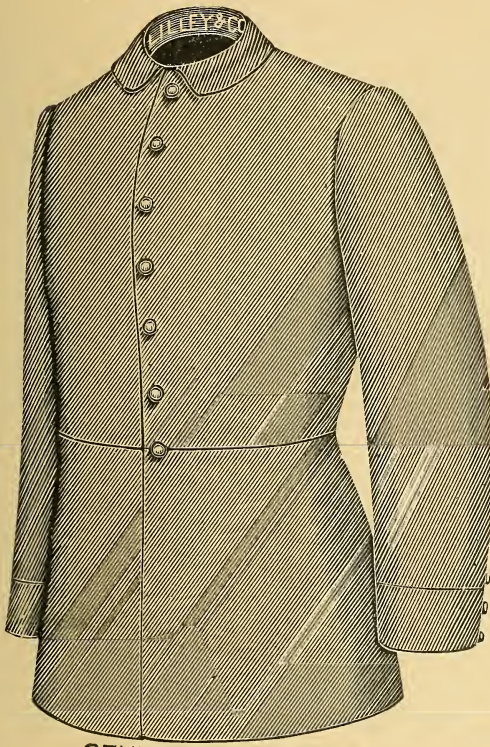
STYLE F-4. A double-breasted, close fitting sack coat, made of dark blue or gray cloth, pure indigo dye; square corners at bottom, rolling collar with lapels, 10 large size regulation gold-plated (or nickel) F. D. Buttons sewed on front in 2 rows of 5 each, 3 small regulation gold-plated (or nickel) F. D. Buttons sewed on each sleeve. Collar, sleeves, front and bottom edges silk stitched; silk button-holes; 2 inside pockets, lined, made to individual measure. Outside pockets, no extra charge, when ordered.

Half inch wide black mohair braid can be added on edges of coat at a slight advance in cost.

Samples of our cloths cheerfully sent upon application. Write for measure blanks and our perfected rules for self-measuring.

STYLE F-4.		COAT	PANTS	
Made of	No.		Without Stripes at Side Seams	With Stripes at Side Seams
	17	Dark Blue Cloth		
"	25	" " " "	4 80	5 40
"	34	" " " "	5 50	6 15
"	170	" " " "	5 90	6 50
"	22	" " " "	7 55	8 95
"	32	" " " "	7 90	8 55
"	8025	" " " "	8 95	9 60
"	4	" " " "	8 95	9 60
"	35	" " " "	9 70	10 30
"	100	" " " "	11 70	12 35
"	10	" " " "	12 60	13 20
"	238	" " " "	15 50	17 15
"	8	Gray Cloth	11 75	12 65
"	1238	" " " "	12 70	13 60
"	314	" " " "	15 25	16 60
"	181	" " " "	17 00	18 30
"	36	Light Blue Cloth	17 00	18 30
"	3	" " " "	5 90	6 50
"	440	" " " "	7 50	8 05
"	841	" " " "	8 10	8 70
"	A	Black Cloth	9 70	10 30
"	B	" " " "	6 20	6 85
"	C	" " " "	7 30	7 95
"	28	Green	7 60	8 20
"	29	" " " "	13 75	14 35
"		Drab or Brown Cloth	14 10	14 75
"		" " " "	15 25	15 90
"		" " " "	5 90	6 50
"		" " " "	7 90	8 55

These Prices Subject to Cash Discount.



STYLE F-5

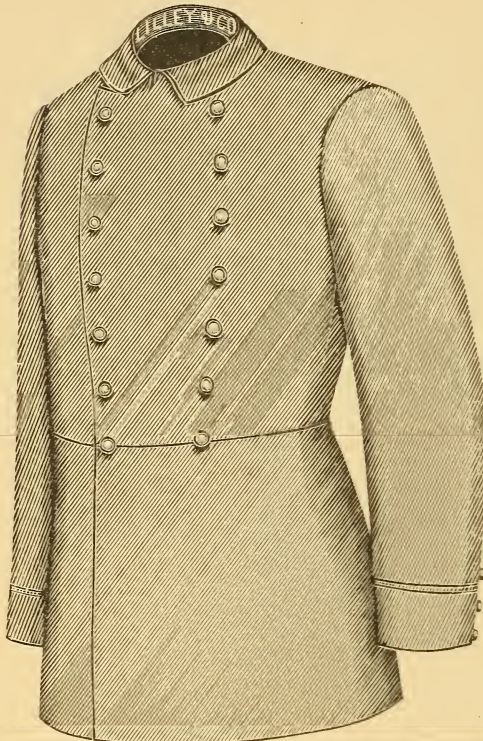
STYLE F-5. A single-breasted short frock dress coat, made in any color cloth, turned down collar with square corners, cut to button close to the neck, 7 nickel or gilt F. D. Buttons on breast, 4 on skirts and 3 on each sleeve, silk stitched, all silk buttonholes, 2 inside pockets, lined, made to individual measure.

Samples of our cloths cheerfully sent upon application. Write for measure blanks and our perfected rules for self measuring.

Satisfactory Fitting Uniform is guaranteed to every purchaser.

STYLE F-5.		COAT	PANTS	
Made of	No.		Without Stripes, Plain Side Seams	With Stripes at Side Seams
17 Dark Blue Cloth		.11 50	.4 80	.5 40
" 25	"	.12 80	.5 50	.6 15
" 34	"	.13 20	.5 90	.6 50
" 170	"	.15 85	.7 55	.8 05
" 22	"	.17 00	.7 90	.8 55
" 32	"	.18 50	.8 95	.9 60
" 8025	"	.18 50	.8 95	.9 60
" 4	"	.19 50	.9 70	.10 30
" 35	"	.22 45	.11 70	.12 35
" 100	"	.23 60	.12 60	.13 20
" 10	"	.31 20	.15 50	.17 15
" 238 Gray Cloth		.13 40	.6 00	.6 65
" 8	"	.15 20	.7 05	.7 60
" 1238	"	.18 50	.8 95	.9 60
" 314	"	.19 50	.9 70	.10 30
" 181	"	.19 50	.9 70	.10 30
" A Black Cloth		.13 80	.6 20	.6 85
" B	"	.16 10	.7 30	.7 95
" C	"	.16 45	.7 60	.8 20
" 28 Green Cloth		.17 00	.7 90	.8 55
" 29	"	.18 50	.8 95	.9 60
" Drab or Brown Cloth		.13 20	.5 90	.6 50
"	"	.17 00	.7 90	.8 55

These Prices Subject to Cash Discount



STYLE F - 6

STYLE F-6. A double breasted, short frock dress coat, made of any color cloth, turned down collar with square corners; cut to button close to the neck, 2 rows of 7 nickel or gilt F. D. Buttons on breast, 4 on skirt and 3 on each sleeve; silk stitched, all silk button-holes, 2 inside pockets, lined, made to individual measure.

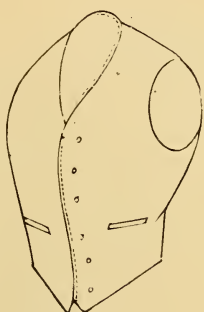
Samples of our cloths cheerfully sent upon application. Write for measure blanks and our perfected rules for self-measuring.

Satisfactory Fitting Uniform is guaranteed to every purchaser.

STYLE F-6.		COAT	PANTS		
			Without Stripes, Plain Side Seams	PANTS With Stripes at Side Seams	
Made of	No. 17	Dark Blue Cloth	.14 80	4 80	5 40
"	25	" " " "	.16 05	5 50	6 15
"	34	" " " "	.16 60	5 90	6 50
"	170	" " " "	.18 80	7 55	8 05
"	22	" " " "	.20 05	7 90	8 55
"	32	" " " "	.22 30	8 95	9 60
"	5025	" " " "	.22 30	8 95	9 60
"	4	" " " "	.23 95	9 70	10 30
"	35	" " " "	.26 45	11 70	12 35
"	100	" " " "	.27 85	12 60	13 20
"	10	" " " "	.35 05	15 50	17 15
"	238	Gray Cloth	.16 90	6 00	6 65
"	8	" " " "	.18 05	7 05	7 60
"	1238	" " " "	.22 30	8 95	9 60
"	314	" " " "	.23 95	9 70	10 30
"	181	" " " "	.23 95	9 70	10 30
"	A	Black Cloth	.17 15	6 20	6 85
"	B	" " " "	.18 55	7 30	7 95
"	C	" " " "	.19 60	7 60	8 20
"	2	Green Cloth	.20 05	7 90	8 55
"	20	" " " "	.22 30	8 95	9 60
"	"	Drab or Brown Cloth	.16 60	5 90	6 50
"	"	" " " "	.20 05	7 90	8 55

These Prices Subject to Cash Discount.

VEST.

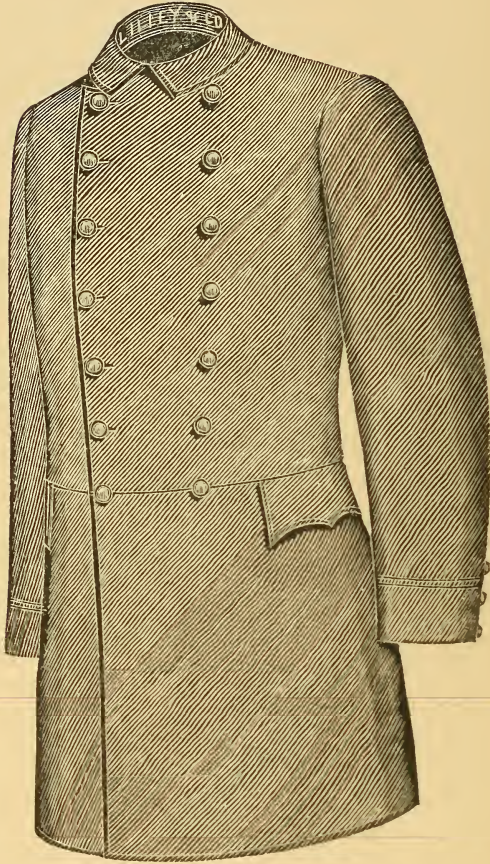


Single breasted, without collar; to button within 5 inches of the neck, with 6 small regulation nickel (or gold-plated) F. D. Buttons, 4 pockets. Satisfactory Fitting Uniform is guaranteed to every purchaser.

				List Price					List Price
Made of No. 17 dark blue cloth,				\$3 50	Made of No. 238 Gray Cloth,				\$3 85
" 25	"	"	"	3 70	" 8	"	"	"	4 05
" 34	"	"	"	3 85	" 1238	"	"	"	5 10
" 170	"	"	"	4 20	" 314	"	"	"	5 30
" 22	"	"	"	4 60	" 181	"	"	"	5 30
" 32	"	"	"	5 10	" A Black	"	"	"	3 90
" 8025	"	"	"	5 10	" B	"	"	"	4 15
" 4	"	"	"	5 30	" C	"	"	"	4 25
" 35	"	"	"	5 70	" 28 Green	"	"	"	4 60
" 100	"	"	"	6 35	" 29	"	"	"	5 10
" 10	"	"	"	7 30	" Drab or Brown	"	"	"	3 85
					" " " "	"	"	"	4 60

These Prices Subject to Cash Discount.

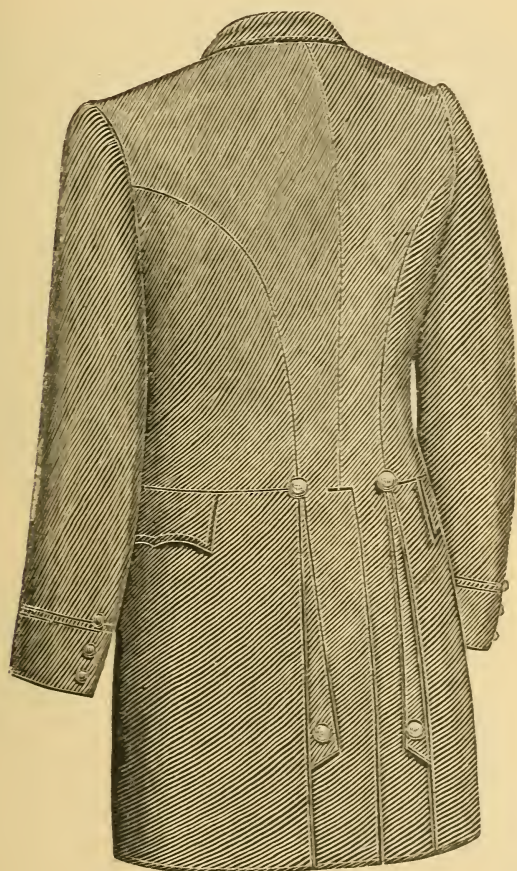
OVERCOATS.



FRONT, STYLE F-7.

Overcoats of regulation or military styles, made in any color cloths. Samples overcoatings and prices sent upon application.

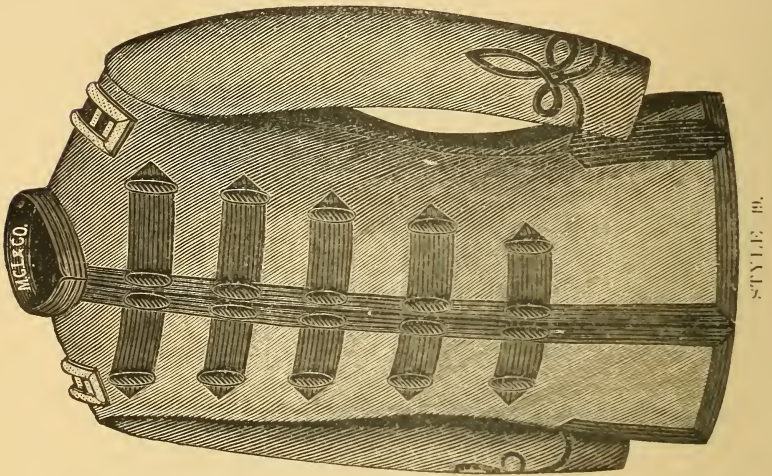
OVERCOATS.



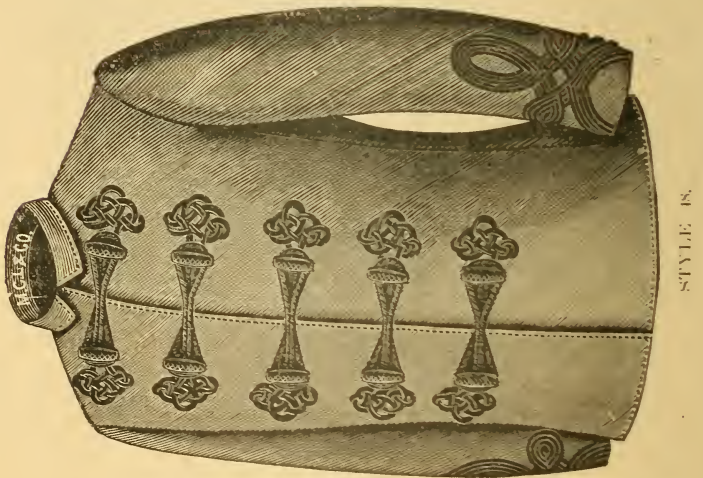
BACK, STYLE F-7.

Overcoats of regulation or military styles, made in any color cloths. Samples overcoatings and prices sent upon application.

FIREMEN'S FANCY PARADE UNIFORMS.



STYLE B.

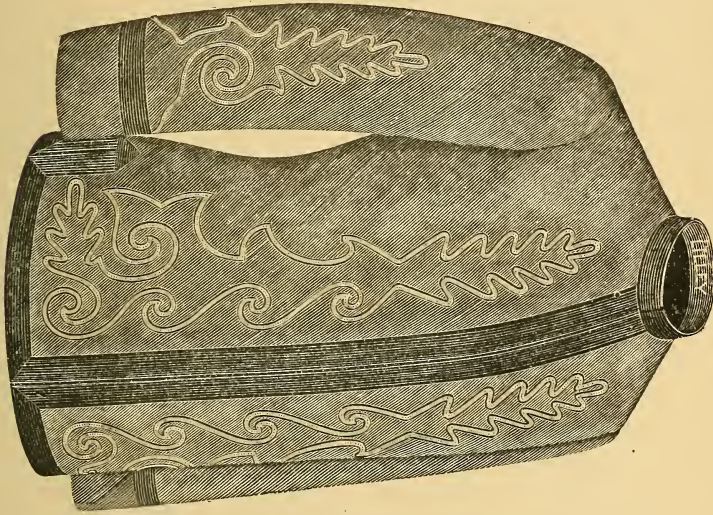


STYLE C.

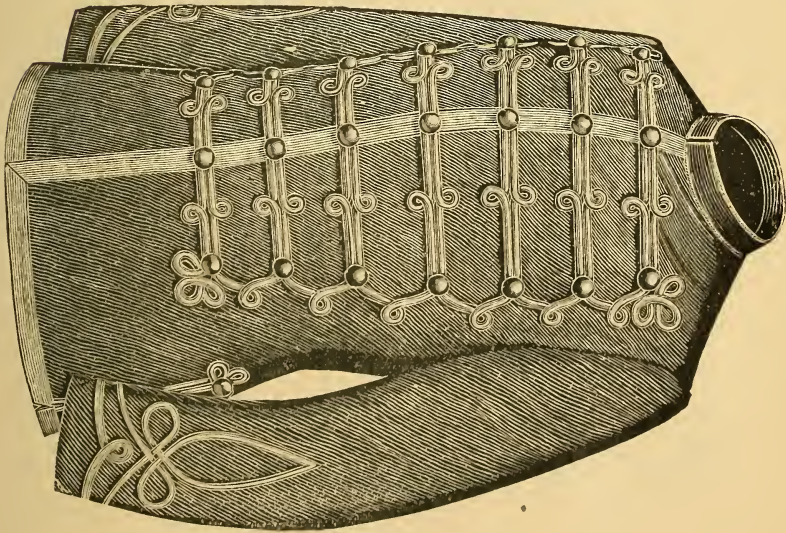
Prices of these Styles Cheerfully Furnished upon Application.

FIREMEN'S FANCY PARADE UNIFORMS.

STYLE 51

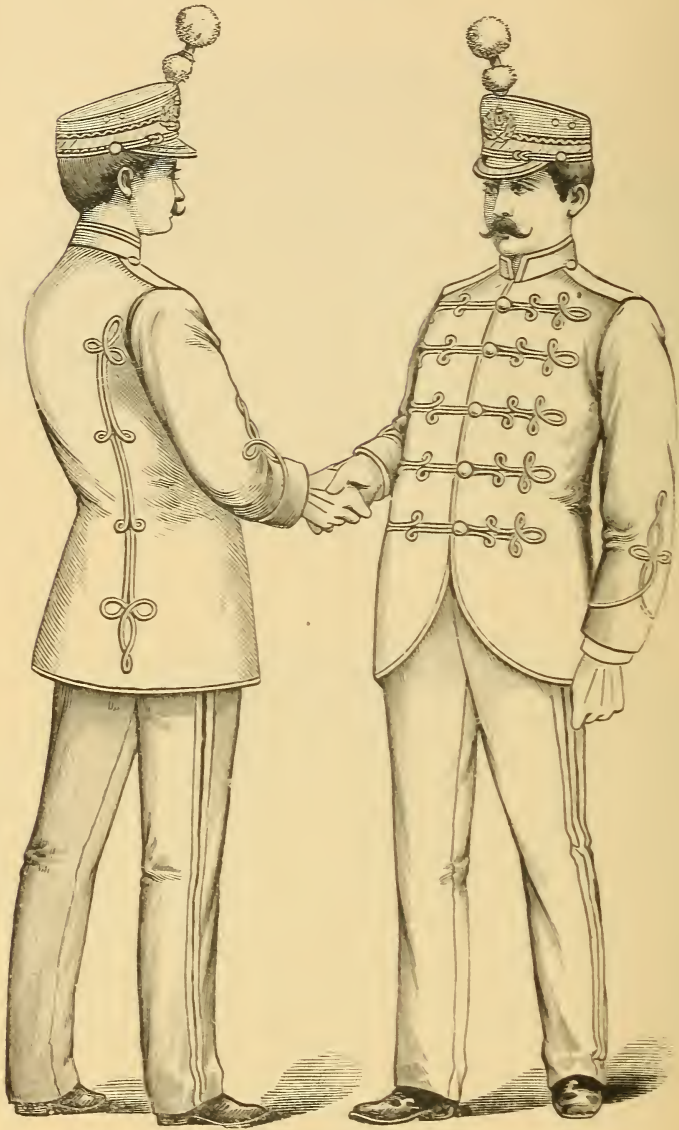


STYLE 52



Prices of these Styles Cheerfully Furnished upon Application.

FIREMEN'S FANCY PARADE UNIFORMS.



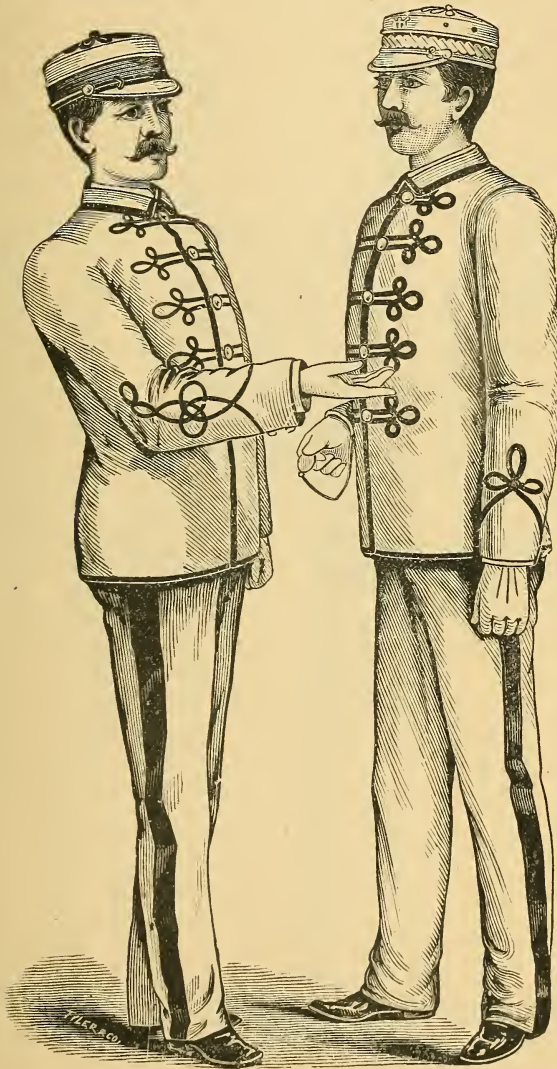
Back.

Style 40.

Front.

Prices of these Styles Cheerfully Furnished upon Application

FIREMEN'S FANCY PARADE UNIFORMS.

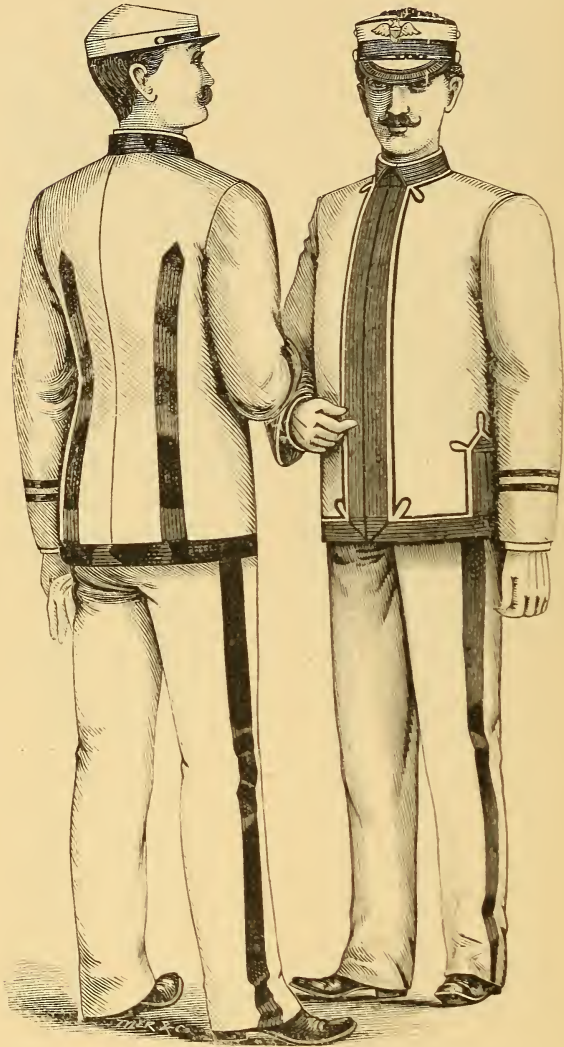


Style 43.

Style 43A.

Prices of these Styles Cheerfully Furnished upon Application.

FIREMEN'S FANCY PARADE UNIFORMS.

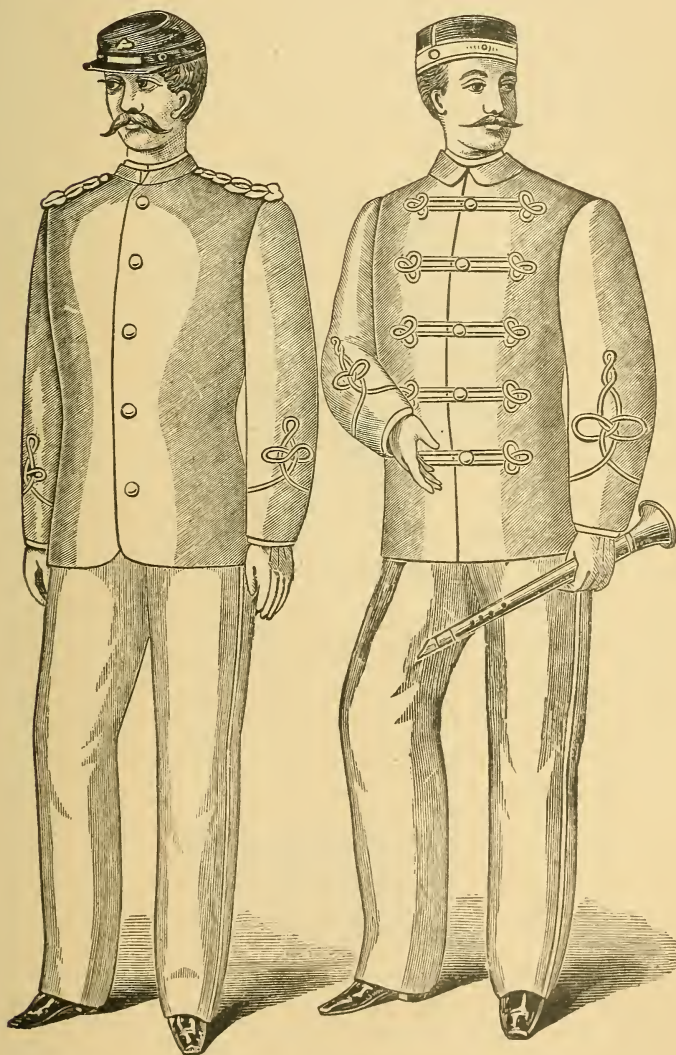


STYLE 41.

STYLE 41 A.

Prices of these Styles Cheerfully Furnished upon Application.

FIREMEN'S FANCY PARADE UNIFORMS.



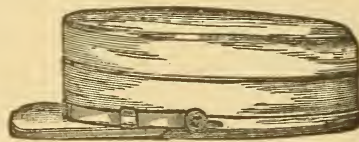
Style 26.

Style 27.

Prices of these Styles Cheerfully Furnished upon Application.

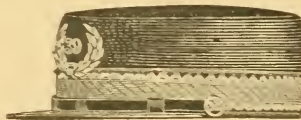
CAPS.

The high reputation of the "Lilley" made Caps will always be maintained, and we pride ourselves upon the fact that no finer Cap can be made than those bearing the "Lilley" trade mark. We will make any special pattern of Cap wanted. We can furnish our Caps made of dark or light blue, gray, black, dark green, brown, drab, white, or any color cloth wanted. We also make Caps of silk, velvet, etc. Gilt buttons furnished on our Caps in place of nickel, when so ordered. Waterproof Cap Covers, cheap quality, \$3 00 per dozen. oiled silk, \$6 00 per dozen.



F-10 TO F-14.

- Cap No. F-10. Summer Cap of White Duck, 1 fixed cover, each. . \$0 70
- Cap No. F-11. Summer Cap of White Duck, 2 removåble covers, for washing, each 95
- Cap No. F-12. Made of dark blue (or any other color) flannel, stiff sides, nickel-plated F. D. Buttons, black patent leather Front Strap, black patent leather bound Vizer, each 90
- Cap No. F-13. Made of dark blue (or any other color) cloth, stiff sides, nickel F. D. Side Buttons, black patent leather Front Strap, black patent leather bound Vizer, each 1 00
- Cap No. F-14. Made of dark blue (or any other color) fine quality of cloth, stiff sides, nickel F. D. Side Buttons, black patent leather Front Strap, black patent leather bound Vizer, each 1 15



F-15 TO F-18.

- Cap No. F-15. Made of dark blue (or any other color) flannel, stiff sides, nickel F. D. Side Buttons, black patent leather Front Strap, black patent leather bound Vizer, 1 inch wide gilt lace or black braid band around bottom, metal wreath and figures, the number of company on front, each \$1 15

These Prices Subject to Cash Discount.

- Cap No. F-16.** Made of dark blue (or any color) cloth, stiff sides, nickel F. D. Side Buttons, black patent leather Front Strap, black patent leather bound Vizor, 1 inch wide gilt lace, or black braid band around bottom, metal wreath and figures, the number of the company on front, each 1 25
- Cap No. F-17.** Made of dark blue (or any other color) fine quality cloth, stiff sides, nickel F. D. Side Buttons, black patent leather Front Strap, black patent leather bound Vizor, 1 inch wide gilt lace or black braid band around bottom, metal wreath and figures, the number of company on front, each, 1 35
- Cap No. F-18.** Same as No. F-17, of extra fine quality of cloth, fine gilt lace band, **HAND EMBROIDERED** gilt bullion wreath and number, each 2 00



F-19 TO F-22.

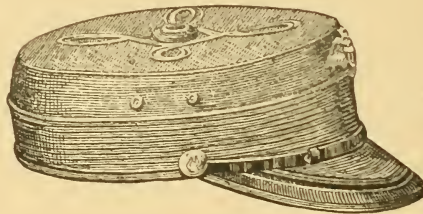
- Cap No. F-19.** Made of dark blue (or any color) flannel, stiff sides, nickel F. D. Side Buttons, black patent leather bound Vizor, gilt double Cord in front, 1 inch wide gilt lace or black band around bottom, metal wreath and figures, the number of company on front, each \$1 25
- Cap No. F-20.** Made of dark blue (or any color) cloth, stiff sides, nickel F. D. Side Buttons, black patent leather bound Vizor, gilt double cord in front, 1 inch wide gilt lace or black braid band around bottom, metal wreath and figures, the number of company on front, each 1 35
- Cap No. F-21.** Made of dark blue (or any color) fine quality of cloth, stiff sides, nickel F. D. Side Buttons, black patent leather bound Vizor, gilt double cord in front, 1 inch wide gilt lace or black braid band around bottom, metal wreath and figures, the number of company on front, each 1 50
- Cap No. F-22.** Same pattern, made of extra fine quality cloth, any color, fine gilt lace or silk band around bottom, hand-embroidered gilt bullion wreath and number, each 2 25

These Prices Subject to Cash Discount.



F-23 TO F-25.

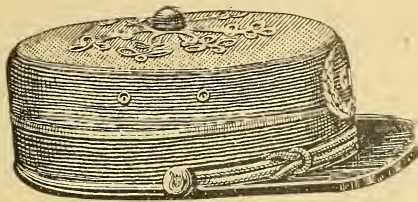
- Cap No. F-23.** Especially adapted for traveling and fatigue duty. Made of dark blue (or any color) cloth, 1 inch wide black braid band around bottom, gilt F. D. Side Buttons, fine gilt cord over top, each \$1 35
- Cap No. F-24.** Same pattern, made of finer quality cloth, each, 1 50
- Cap No. F-25.** Same pattern, made of fine black silk, gilt cord, etc., each 1 50



F-26 - F-27.

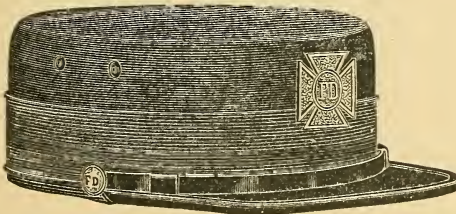
- Cap No. F-26.** Made of dark blue (or any color) cloth, ventilated sides, 1 inch wide black mohair braid band around bottom, nickel F. D. Side Buttons, braided on crown with black braid and black silk button in center, black patent leather Front Strap, black patent leather drooping Vizor, each \$1 45
- Cap No. F-27.** Made of dark blue (or any color) cloth, ventilated sides, 1 inch wide black mohair braid band around bottom, nickel F. D. Side Buttons, braided on crown with black braid and black silk button in center, black patent leather Front Strap, black patent leather drooping Vizor, each 1 65

These Prices Subject to Cash Discount.



F-28 TO F-30.

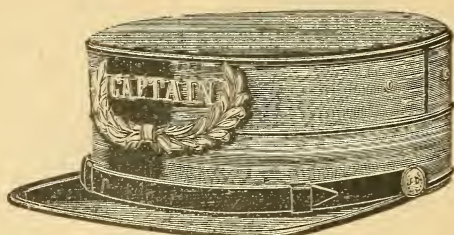
- Cap No. F-28. Made of dark blue (or any color) cloth, ventilated Sides, nickel F. D. Side Buttons, braided on crown with black, blue, or any color braid, black or gilt button in center, gilt or black double front cord, gilt metal wreath and silver metal initials or figures, each \$1 75
- Cap No. F-29. Same pattern, of finer quality cloth, each 1 95
- Cap No. F-30. Same pattern, and with fine gilt bullion hand embroidered wreath, and initials or figures, each 2 50



F-31 TO F-33.

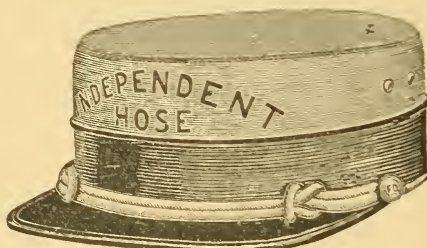
- Cap No. F-31. Regulation pattern, and one of the most popular styles made; ventilated sides, made of dark blue (or any color) cloth, 1 inch wide black mohair braid band around bottom, nickel F. D. Side Buttons, black patent leather Front Strap, black patent leather bound Vizor, our handsome design nickel F. D. Cap Badge on front (illustration of cap badge on page 37), each \$1 45
- Cap No. F-32. Regulation pattern, spring top, ventilated sides, of dark blue (or any color) cloth, 1 inch wide black mohair braid band around bottom, nickel F. D. Side Buttons, black patent leather Front Strap, black patent leather bound Vizor, our handsome design nickel F. D. Cap Badge on front (illustration of cap badge on page 37), each 1 65
- Cap No. F-33. Regulation pattern, spring top, ventilated sides, of fine quality dark blue (or any color) cloth, satin lined, 1 inch wide black silk band around bottom, nickel F. D. Buttons, black patent leather Front Strap, black patent leather Vizor, our handsome design nickel F. D. Cap Badge on front (illustration of cap badge on page 37), each 2 05

These Prices Subject to Cash Discount.



F-35 TO F-37.

- Cap No. F-35.** N. Y. regulation cap, spring top, ventilated sides, of dark blue (or any color) cloth, nickel F. D. Side Buttons, black patent leather Front Strap, black patent leather bound Vizor, each \$1 50
 With our nickel F. D. Cap Badge add 25 cts.
 With wreath and officers' title added, see page 36.
- Cap No. F-36.** N. Y. regulation, spring top, ventilated sides, of dark blue (or any color) cloth, satin lined, nickel F. D. Side Buttons, black patent leather Front Strap, black patent leather Vizor, each 1 65
 With our nickel F. D. Cap Badge, add 25 cts.
 With wreath and officers' title added, see page 36.
- Cap No. F-37.** N. Y. regulation, spring top, ventilated sides, of blue (or any color) extra fine quality of cloth, satin lined, nickel F. D. Side Buttons, black patent leather Front Strap, black patent leather bound Vizor, each 1 85
 With our nickel F. D. Cap Badge, add 25 cts.
 With wreath and officers' title added, see page 36.



F-40 TO F-42.

- Cap No. F-40.** Our special and very popular pattern, made of dark blue (or any color) cloth, ventilated sides, 1 inch wide black mohair braid band around bottom, gilt F. D. Side Buttons, double gilt front cord, spring top, black patent leather bound Vizor, each \$1 40
 Name of company in silver plated letters, add 2 cts. per letter.
 Name of company in gilt or silver bullion embroidered, add 10 cts. per letter.

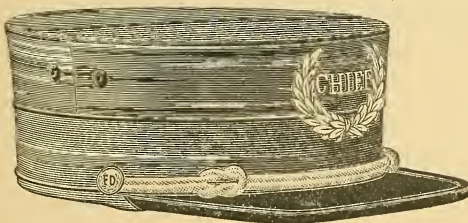
These Prices Subject to Cash Discount.

Cap No. F-41. Spring top, made of dark blue (or any color) cloth, ventilated sides, 1 inch wide black mohair braid band around bottom, gilt F. D. Side Buttons, double gilt front cord, black patent leather bound Vizor, each 1 50
 Name of company in silver plated metal letters, add 2 cts. per letter.

Name of company in gilt or silver bullion embroidered, add 10 cts. per letter.

Cap No. F-42. Spring top, made of dark blue (or any color) extra fine quality cloth, satin lined, ventilated sides, 1 inch wide black mohair braid band around bottom, gilt F. D. Side Buttons, fine quality double gilt cord, black patent leather bound Vizor, each 1 75
 Name of company in silver plated metal letters, add 2 cts. per letter.

Name of company in gilt or silver bullion embroidered, add 10 cts. per letter.



F-45 TO F-47.

Cap No. F-45. Officers' pattern, spring top, ventilated sides, made of dark blue (or any color) cloth, gilt F. D. Side Buttons, fine quality double gilt front cord, black patent leather bound Vizor, each \$1 65

With our nickel F. D. Cap Badge, add 25 cts.

With wreath and officers' title added, see page 36.

Cap No. F-46. Officers' pattern, spring top, ventilated sides, made of dark blue (or any color) cloth, gilt F. D. Side Buttons, fine quality double gilt front cord, satin lined, black patent leather bound Vizor, each 1 80

With our nickel F. D. Cap Badge, add 25 cts.

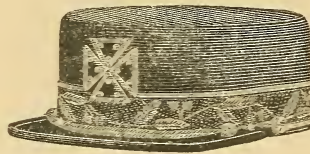
With wreath and officers' title added, see page 36.

Cap No. F-47. Officers' pattern, spring top, ventilated sides, made of dark blue (or any color) extra fine quality cloth, satin lined, gilt F. D. Side Buttons, fine quality double gilt front cord, black patent leather bound Vizor, each 2 00

With our nickel F. D. Cap Badge, add 25 cents.

With wreath and officers' title added, see page 36.

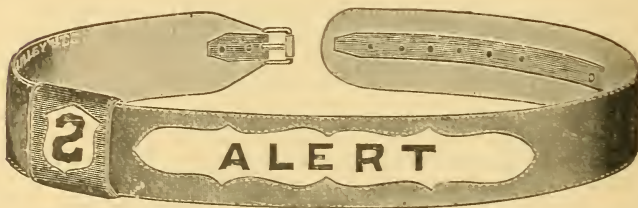
These Prices Subject to Cash Discount,



Presentation Caps, with fine embroidered band and front ornament, at from \$5 00 to \$10 00 each.

BELTS.

White web waist belts, with plain brass buckle plate, doz.	\$ 3 50
White web waist belt, brass buckle plate with letter, doz.	6 25
White web waist belt, brass buckle plate with monogram, doz.	10 00
White buff leather waist belt, buckle plate, with letter, doz.	12 75
White buff leather waist belt, buckle plate, with monogram, doz.	16 50
White enameled leather waist belt, buckle plate, with letter, doz.	17 75
White enameled leather waist belt, buckle plate, with monogram, doz.	21 00
Belt No. F-55. Service Belt of heavy black harness leather, 1 $\frac{3}{4}$ ins. wide, polished brass adjusting buckle, with 1 in. nickel-plated number of company, each	
	\$ 65
Same Belt, with pair Spanner Sockets added, each	1 15

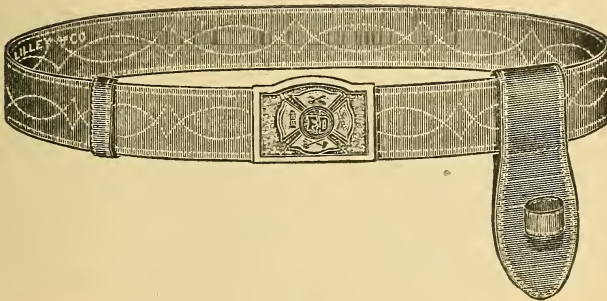


F-56 - F-57.

Belt No. F-56. Made of black patent leather, silk stitched around edges, silk stitched sunken panel, with raised cut-out patent leather letters on panel, number on panel of loop, lined back of panel only, including lettering and number, each	\$ 75
Same Belt, but made of colored patent leather, each	90
Either of the above Belts, with 2 Spanner Sockets, add	50

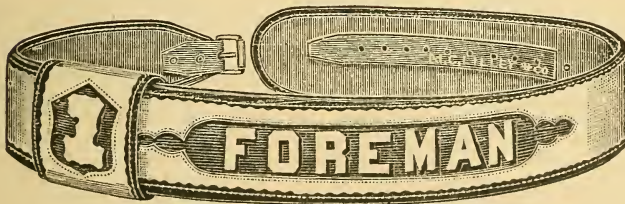
These Prices Subject to Cash Discount.

- Belt No. F-57.** Made of black patent leather, silk stitched around edges, full lined, silk stitched sunken panel, with raised cut-out patent leather letters on panel, number on panel of loop, including lettering and number, each 90
 Same Belt, made of colored patent leather, each 1 05
 Either of the above Belts, with 2 Spanner Sockets, add 50



F-59.

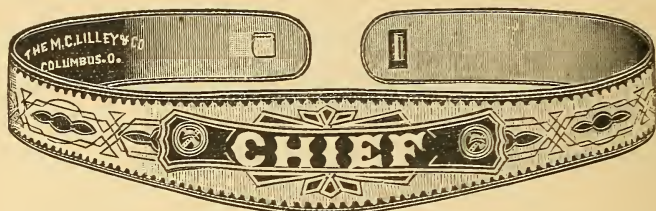
- Belt No. F-59.** Made of fine red (or any color) enameled leather, silk stitched, gilt adjusting buckle, with nickel-plated F. D. Badge in center, a handsome service or dress belt, each 1 50
 Same belt, with 2 Spanner Sockets, each 2 00



F-61.

- Belt No. F-61.** Of selected black patent leather, bound on edges with scalloped enameled leather, any color, and silk stitched, with stitched sunken panel, with raised cut out patent leather letters on panel, number on panel on loop, full lined, each, \$1 45
 Belt, same, made of any color patent leather, each 1 65
 Either of above belts, with 2 Spanner Sockets, add 50

These Prices Subject to Cash Discount.



F-63.

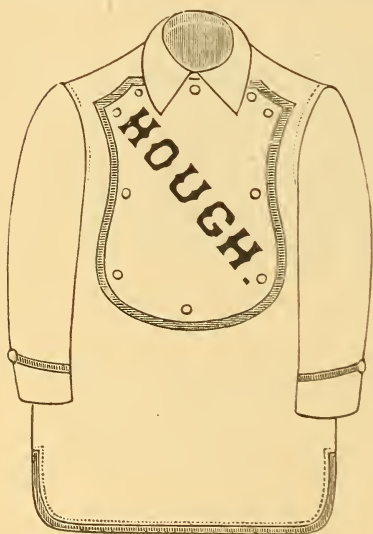
Belt No. F-63. Fancy cut and inlaid belt, of any color patent leather, double silk stitching, fancy lettering and special workmanship, each, from \$4 to \$8 00



F-65.

Belt No. F-65. Officers' Association Belt, made of any color patent leather, silk stitched, special lettering and workmanship, each, from \$5 00 to \$8 00

Belts for Prizes, Presentation, Championship, etc., made in Russia leather, gold bullion hand-embroidered; made of velvet; made of fancy leathers and gold lace covered. Designs and prices cheerfully submitted.

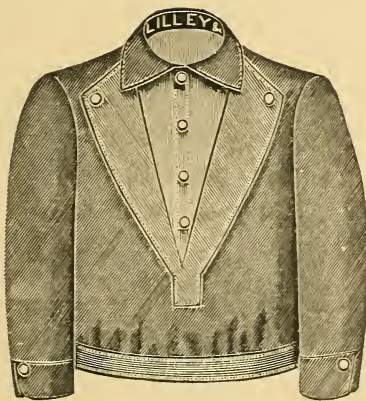


STYLE F-72 TO 75.



STYLE F-76.

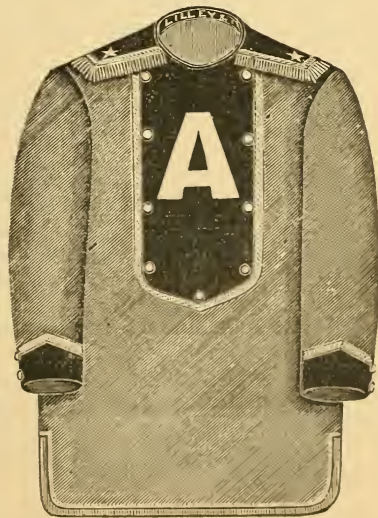
These Prices Subject to Cash Discount.



STYLE F-78. (JACKET).



STYLE F-80.



STYLE F-82.

FLANNEL SHIRTS AND JACKETS.

For Dress Parade and Service.

Where an inexpensive, yet attractive Uniform is wanted, no better investment can be made than to purchase one of our Standard sets of equipments, SHIRT, BELT AND CAP. Uniform Pants can also be added at a slight increased cost.

Our Shirt Flannels are guaranteed all wool, and can be furnished in dark or light blue, red, white, dark green, gray, black, or most any shade of color desired.

Figures, letters, monograms or F. D. designs on shirts. We produce many artistic effects in a contrasting color of silk, velvet, cloth or leather, "cut out" and stitched on shirt. Also special designs are made in embroidery work in silk and gold, or silver bullion.

In trimming our shirts on edges of collar, shield and cuffs, we use any color worsted or mohair braid, gilt or silver lace, velvet, silk or satin ribbon. Collars made of special pattern, with fringe, stars, etc.

Our Buttons are gilt and nickel plated, F. D., Eagle or Ball Buttons. Where desired, we will furnish (any color) cloth covered buttons. We do not claim to make **the Cheapest**, but know we make **the Very Best Shirts and Jackets** used for fire service, and to show the superiority of our styles, quality and work, we will send samples of shirts, according to terms on inside front cover. Samples of Flannels sent upon application, free of charge.

Write for our perfected rules and blanks for self-measuring for shirts.

- No. F-70.** Dark blue all wool flannel shirt, plain, for service, double thickness cuffs, yoke and collar, 1 pocket, each \$ 2 25
- No. F-71.** Same shirt, with number on breast, or initials of Company, each 2 55
- No. F-71½.** Dark blue all wool flannel Shirt, square shield on front, intended for daily service, extra quality flannel 3 75
- No. F-72.** Made either shirt or jacket length, any color or combination of colors, company number or initials on shield, either gilt or nickel buttons, each 4 20

These Prices Subject to Cash Discount.

- No. F-73. Made either shirt or jacket length, any color or combination of colors, one-half inch wide any color worsted braid on edges of collar, shield and cuffs, company number or initials on shield, either gilt or nickel buttons, each 4 50
- No. F-74. Same shirt, made of extra fine quality flannel 5 75
- No. F-75. Made either shirt or jacket length, any color or combination of colors, one-half inch wide any color worsted braid on edges of collar, shield and cuffs, company number or initials on shield, shield made reversible, both sides same color or each different, gilt or nickel buttons, each 5 00
- No. F-76. Made either shirt or jacket length, any color or combination of colors, fancy braided edges of collar, shield and cuffs, company number and initials on shield, gilt or nickel buttons, each 5 00
- No. F-77. Same shirt, made of extra fine quality flannel, each 6 25
- No. F-78. Made either shirt or jacket length, any color or combination of colors, lapels of contrasting color of flannel, with bosom made of any color satin. Gilt or nickel buttons, each 4 75
- No. F-79. Same shirt, of extra fine quality flannel and satin, each, 6 00
- No. F-80. Made shirt or jacket length, double-breasted, loose fitting, open low at neck, large collar and lapels combined, collar, lapels and cuffs of satin, handsomely quilted, gilt or nickel buttons, each 4 50
- No. F-81. Same, made of extra fine quality flannel and satin, each 6 00
- No. F-82. Made either shirt or jacket length, any color or combination of colors, shield and cuffs edged with one-half inch gilt or silver lace, large cape collar, with one-half inch wide gilt or silver lace and gilt or silver fringe all around edges of collar, 5 gilt or silver stars on collar, gilt or nickel buttons, each 5 25
 Same, made with velvet collar, shield and cuffs, and of extra fine quality flannel, each 6 75

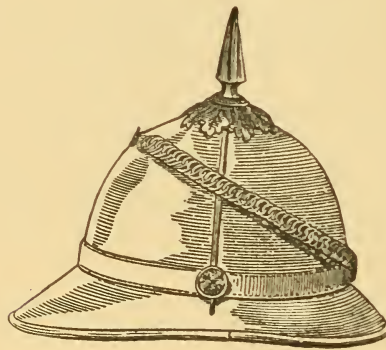
We make a specialty of fine shirts or jackets suitable for presentation, prizes, etc. Prices and samples of materials cheerfully furnished upon application.

FIRE HELMETS.

Aluminum Fire Helmet. For Service and Parade Purposes.

We are the first to introduce an Aluminum Metal Fire Helmet. We have been making extensive experiments for the improvement of the Fire Helmet, and have about perfected a thoroughly practical Aluminum Metal Fire Helmet. It will embody many advantages over the leather Helmet, and will be ready for the market shortly after this catalogue is published. The construction of the Helmet will be protected by our patents of 1884 for Sectional Metal Helmets. Write for particulars of our Aluminum Metal Fire Helmet.

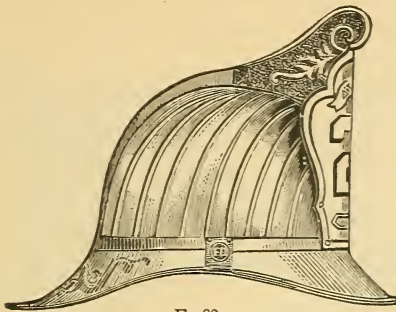
FANCY PARADE HELMET.



We can furnish Fancy Parade Helmets in any color wanted. Double cork body, furnished with any color cloth, with or without front ornament, spike and base on top, or any color plume, Prices, each, from \$2 50 to \$6 00

Nickel Plated Metal Helmets, the showiest of all helmets, with or without plume, each, from \$1 90 to 5 00

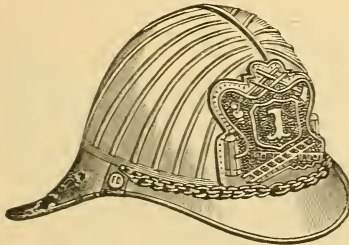
We have a Metal Helmet with Cap Torch on top, for night parades, etc., each 2 00



F-83.

No. F-83. Improved Roman Helmet, Ventilated. With embossed Vizors, metal Side Plates, etc. This Helmet, while it resembles in general outline the famous Roman style, has distinctive features which identifies it with the fire service. The scroll and side ornaments are of metal, either nickel or gilt (we arrange to suit the color of the Helmet), the front is of patent leather. We believe it to be the most graceful and becoming head-dress of its kind yet produced, and heartily recommend it over either of the other styles of Helmets. Suitable for service or parade. Net price, in black, per doz. \$52 00
 Colors, per doz. \$55 00

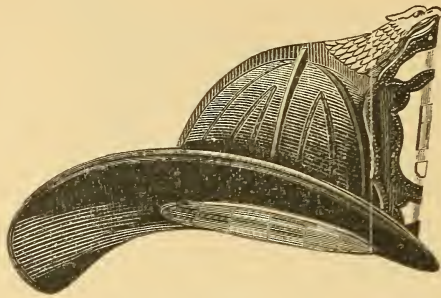
We can add very much to the attractiveness and strength of these Helmets by binding the edge of the vizors with metal, at \$3 00 per dozen extra.



F-84.

No. F-84. Improved Roman Dress Parade Helmet, Ventilated. With embossed Vizors, metal Side Plates, Etc. A new and tasty design of Helmet for dress parade. The skull is made hard, of the Roman pattern. The front and side ornaments are of metal, with appropriate fire emblems and number raised. Gold or silver cord knot. Weight about 8 ounces. Net price, black, per doz. \$53 00
 Colors, per doz. 56 00

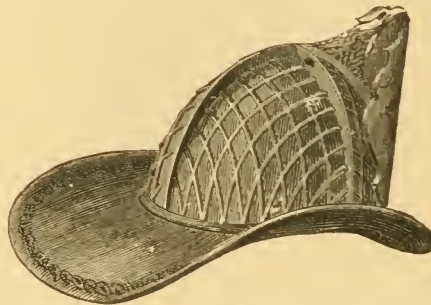
Trimmings either nickel-plated or gilt.
 Can be furnished with a leather chin strap in place of the gold cord as shown, at \$5 00 per doz. less.
 Officers' titles, engraved on front, in addition to company number, 50 cents to 75 cents each extra.
 If Vizors bound with metal, add \$3 00 per dozen.



F-85.

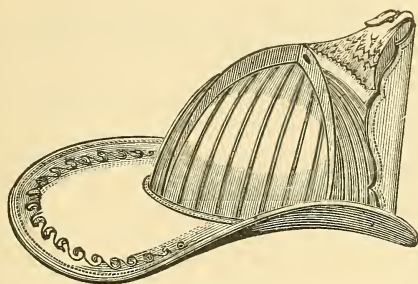
- No. 85 "Standard" 8 Comb Regulation Hat.** With Patent Ventilating Combs and Lining. Made in light, medium or heavy weight. Net Price, black, per doz. \$54 00
Colors, per doz. 57 00

- No. F-86. "Standard" Re-Enforced Hat for Paid Department Service.** These hats are made of especially selected heavy stock, and in addition to the improved features found in our "Standard" No. 85 hat, have the parts liable to be effected by water or heat re-enforced by metal, thus securing strength and durability. Supplied with a nickel hanger, for attaching to apparatus. Highly commended by practical firemen. Net price, black, per doz. 57 00
Colors, per doz. 60 00



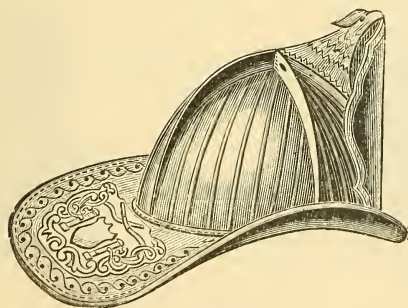
F-87.

- No. F-87. "Standard" 68 Comb Regulation Hat.** With Patent Ventilating Combs and Lining. Made in light, medium or heavy weight. In this hat an entirely new feature is introduced, namely: that of curving and intersecting the small combs, thereby producing the handsome effect shown in the cut. The design adds not only beauty, but strength, as the intersecting combs constitute a series of cross-bracings calculated to give stiffness to the skull of the hat. Net price, black, per doz. \$60 00
Colors, per doz. 63 00



F-88.

No. F-88. "Standard" 32 Comb Regulation Hat. With Patent Ventilating Combs and Lining. Made in light, medium or heavy weight. The combs are embossed, and their number (32) selected with reference to their appearance on parade. They are about three-fourths of an inch apart, and show to much better advantage than if the number were greater. It is decidedly the handsomest regulation hat we make, and is becoming more popular every season. Net price, black, per doz. \$60 00
 Colors, per doz. 63 00
 If re-enforced, 25 cents each extra.



F-89.

No. F-89. Improved 32 Comb Hat. With Patent Ventilating Combs and Lining. Embossed Rim, etc. The desire on the part of officers for a hat somewhat finer than the regular company pattern, has induced us to offer the above design. It is furnished with gold-plated Crest, satin lining, embossed Rim and fancy stitched front, and is in every respect a first-class hat. Net price, each \$8 00
 When ordered by full board of officers, each 7 50
 If re-enforced, 25 cents each extra.

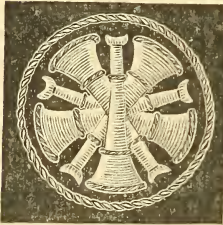
OFFICER'S INSIGNIAS.

For Designating the Officers' Rank.

Requires 1 for cap, 2 for coat collar or coat lapels. Our embroidered Officers' Insignias are all of the finest hand embroidery work, and for rich effect are superior to the plated metal insignias. This establishment has for years been noted for its superior embroidery. All embroidered insignias are on **Dark Blue Cloth**, except—

- Hook and Ladder Service, on Red Cloth.
- Hose Company " " Light Blue "
- Steamers " " Yellow "
- Salvage Corps " " Orange "

If any other color cloth is desired, please specify color wanted.



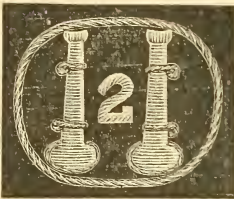
CHIEF.
No. F-100.
No. F-107.



ASS'T CHIEF.
1ST ASS'T CHIEF.
No. F-101.
No. F-108.



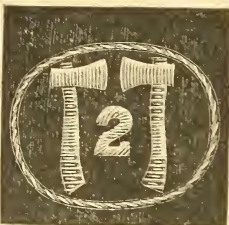
ASS'T CHIEF.
2D ASS'T CHIEF.
No. F-102.
No. F-109.



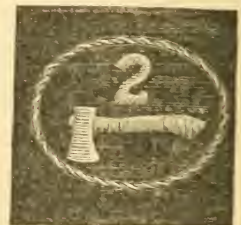
FOREMAN.
CAPTAIN.
No. F-103.
No. F-110.



ASS'T FOREMAN.
1ST LIEUT.
No. F-104.
No. F-111.



H. & L. FOREMAN.
H. & L. CAPTAIN.
No. F-105.
No. F-112.



H. & L. ASS'T FOREMAN.
H. & L. 1ST LIEUT.
No. F-106.
No. F-113.

No. F-100.	Embroidered Insignia, Fine Gilt Bullion, each	\$1 10
No. F-100.	“ “ Real Gold “ “	1 40
No. F-101.	“ “ Fine Gilt “ “	85
No. F-101.	“ “ Real Gold “ “	1 15
No. F-102.	“ “ Fine Gilt “ “	65
No. F-102.	“ “ Real Gold “ “	85
No. F-103.	“ “ Fine Gilt “ “	75
No. F-103.	“ “ Real Gold “ “	1 05
No. F-104.	“ “ Fine Gilt “ “	65
No. F-104.	“ “ Real Gold “ “	85
No. F-105.	“ “ Fine Gilt “ “	65
No. F-105.	“ “ Real Gold “ “	85
No. F-106.	“ “ Fine Gilt “ “	55
No. F-106.	“ “ Real Gold “ “	75
No. F-107.	Gold Plated Metal Insignia, each	2 20
No. F-108.	“ “ “ “	1 35
No. F-109.	“ “ “ “	1 15
No. F-110.	“ “ “ “	1 15
No. F-111.	“ “ “ “	90
No. F-112.	“ “ “ “	1 15
No. F-113.	“ “ “ “	90

SHOULDER STRAPS.



Metal Shoulder Straps, gold or silver-plated border, any color center, per pair \$1 00

Hand embroidered bullion, gilt or silver, any color center, officers' title embroidered on center, "Chief," "Captain," "Foreman," "Pres't," "Vice-Pres't," "Sec'y," "Treas.," etc., embroidered in fine gilt, pair 3 10

Embroidered in real gold, per pair 5 25

These Prices Subject to Cash Discount.

STANDARD CAP BADGE.

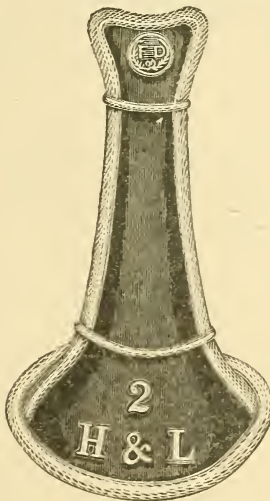


SIZE 1 3/4 X 1 3/4.

Our own design. A distinct and emblematical F. D. Cap Ornament.

- No. F-125. "Die" Struck, handsome in design and finish, nickel plated, each 50 cts. Per doz. \$5 00
 Gold plated, each, 65 cts. Per doz. 6 00

SHOULDER KNOTS.



F-120 to F-123.

Our original design, "Fireman's Trumpet" Shoulder Knot, very attractive, and neat addition to any company's dress uniform.

- No. F-120. Made of gilt cord, red or dark blue center, gilt Button, per pair \$1 50
 No. F-121. Made of fine gilt cord, red or dark blue center, gilt Button, per pair 1 80
 No. F-122. Made of fine gilt wire cord, red or dark blue center, gilt Button, per pair 1 90
 No. F-123. Made of fine gilt wire cord, red or dark blue center, gilt Button, with Embroidered Officer's Insignia on pad, pair, 2 60

These Prices Subject to Cash Discount.



Copyrighted.

SCALE OF SIZE, 36X60 INCHES.

PARADE AND PRIZE BANNERS.

The following quotations are on entirely new designs and effects in Banners, original with us. We would particularly emphasize these facts, that when we say gold leaf, we do not give you Dutch metal or other composition. The painting in oil is produced with the best quality of tube paints, not the common paints used by house and sign painters. The colors of the silks used in these Banners are red, white and blue, purple, yellow and green, or any color or combinations of colors. Combinations of colors can be changed without changing the prices as quoted. Photographs of Banners and special designs submitted free to responsible parties.

- No. F-130.** 36 x 60 inches, of No. 1 silk front and back; hood or curtain of same silk; hood trimmed with gilt lace, gilt fringe and two gilt tassels; name in gold leaf; design gold leaf and colors, scroll painted in oil, all lettering in gold leaf, trimmed with gilt lace all around front and back, gilt fringe and tassels at bottom, cross-bar with metal acorn tips, hung with gilt heavy cord, two large gilt tassel pendants, staff surmounted with gilt spear banner top, with patent leather holster for carrying \$ 48 00
- No. F-131.** Banner, 36 x 60 inches, of No. 2 silk front, hood or curtain of No. 1 quality silk, back of No. 1 silk, trimmed with gilt gimps, fine gilt zephyr fringes on hood and bottom of banner, finer finished top, otherwise same as No. F-130 51 50
- No. F-132.** Banner, 36 x 60 inches, of No. 2 silk front, hood or curtain of No. 1 silk, back of No. 2 silk, with gilt bullion fringe on sides of banner, zephyr gilt fringe on hood and bottom of banner, otherwise same as No. F-131 56 50
- No. F-133.** Banner, 36 x 60 inches, of No. 1 silk, with heavy lambrequin hood or curtain of same silk, two gilt tassels at points of lambrequin hood, gilt lace trimmed, with gilt bullion fringe at bottom. Banner trimmed with gilt lace front and back, gilt bullion fringe at bottom, with three heavy gilt tassels, design painted in colors and gold leaf, scroll in oil, all lettering in gold leaf, cross-bar with metal acorn tips, staff with gilt spear top, patent leather holster for carrying 55 00
- No. F-134.** Banner, 36 x 60 inches, of No. 2 silk, with lambrequin of No. 1 silk, back of No. 1 silk, gilt gimp trimmings on hood and banner proper, otherwise same as No. F-133 60 00
- No. F-135.** Banner, 30 x 60 inches, of No. 2 silk, No. 1 silk in lambrequin, back of banner of No. 2 silk, gilt bullion fringe on sides and bottom, all lettering in gold leaf and shaded in colors, otherwise same as No. F-134 banner 70 00

The backs of these Banners are plain. If lettering is wanted on back, it will cost additional.

These Prices Subject to Cash Discount.

- No. F-136.** Banner, 36 x 60 inches, lambrequin, banner proper and apron of different colors No. 1 silk, composed of the colors in any combination, all lettering and scroll work in gold leaf, the initial letters in background on lambrequin in any colors, design in gold leaf and colors, scroll in any color in oil, lambrequin trimmed in gilt gimp, fine, gilt, brilliant, bullion fringe at bottom of lambrequin, and two gilt tassels, banner proper and apron trimmed with gilt gimps, at bottom of both fine, gilt, heavy zephyr fringe, cross-bar with fine metal tips, staff with gilt spear top, patent leather holster for carrying 75 00
- No. F-137.** Banner, 36 x 60 inches, any tri-color combination desired, lambrequin hood with center overdrop, at bottom point of banner an over-drop panel with location, on banner proper, design in gold leaf and colors, lettering in gold leaf, name on over-drop of hood in gold leaf, lambrequin of No. 1 silk, back of No. 1 silk, trimmed in gilt gimp, gilt bullion fringe on bottom of over-drop, and under points, two gilt tassels, banner proper trimmed in gilt gimp, extra fine and heavy bullion fringe at bottom, three heavy gilt tassels, scrolls in oil and gold leaf, banner hung by gilt metal rings on metal cross-bar, gilt cord and extra heavy fine gilt tassel pendants, cross-bar with metal fancy tips, staff, gilt eagle top, fine leather holster for carrying 75 00
- No. F-138.** Banner, 36 x 60 inches, banner of No. 2 silk, lambrequin of No. 1 silk, back of No. 1 silk, silver-plated gimp, tassels and brilliant fringe on lambrequin, on banner proper, gilt gimp, fine gilt extra heavy bullion fringe at bottom, gilt heavy tassels, otherwise banner as No. F-137 85 00
- No. F-139.** Banner, 36 x 60 inches, banner of No. 2 silk, lambrequin of No. 1 silk, back of No. 2 silk, banner and lambrequin trimmed with two patterns of fine gilt Spanish lace; gilt bullion fringe at sides, gilt dull and brilliant fringe on lambrequin, fine gilt heavy bullion fringe at bottom of banner, all lettering in gold leaf, shaded in colors, otherwise same as No. F-138 110 00

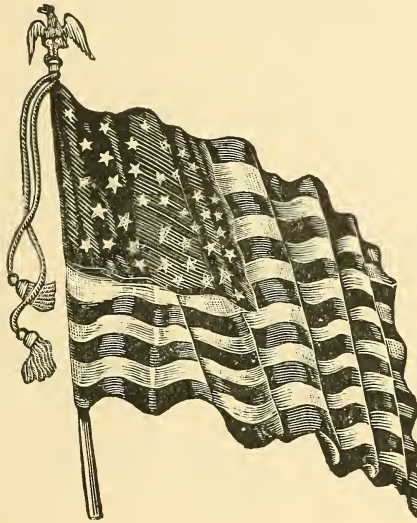
These Banners have no lettering or painting on the backs. Lettering on back will cost additional.

Special designs of Presentation or Prize Banners, embroidered in gold or silver-plated bullions or silk chenilles, or a combination of the three, at from \$175 to \$700.

These Prices Subject to Cash Discount.

UNITED STATES SILK PARADE FLAGS.

Lettering Extra. All Fast Colored Silk. Gold Leaf Stars, or Silk Embroidered Stars, Same Price. State Which are Preferred.



- No. F-140. U. S. Regulation Flag, 6x6½ feet, made of No. 2 silk, gold leaf or silk embroidered stars, trimmed with gold colored silk bullion fringe, silk cord and tassels, stained staff, metal spear head, belt and oil cloth cover, all complete, \$48 00
- No. F-141. Same as No. F-140, but trimmed with gold bullion fringe, and gold cord and tassels, and eagle on staff 53 00
- No. F-142. U. S. Regulation Flag, 6x6½ feet, made of No. 3 silk, gold leaf or silk embroidered stars, silk trimmed and mounted, same as No. F-140, complete 64 00
- No. F-143. U. S. Regulation Flag, 6x6½ feet, No. 3 silk, gold stars, trimmed with gold bullion fringe, fine large gold tassels and cord, polished walnut jointed staff, fine metal eagle, belt and cover, all complete 76 00
- No. F-144. U. S. Flag, 45x60 inches, No. 2 silk, gold leaf or silk embroidered stars, gold colored silk bullion fringe, silk cord and tassels, staff, metal spear head, belt and cover 37 00

These Prices Subject to Cash Discount

No. F-145.	U. S. Flag, 45x60 inches, No. 2 silk, gold leaf or silk embroidered stars, gold fringe and tassels, staff and eagle, belt and cover, complete	42 00
No. F-146.	U. S. Flag, 45x60 inches, No. 3 silk, gold leaf or silk embroidered stars, gold fringe and tassels, jointed staff and metal eagle, belt and cover, complete	50 00
No. F-147.	U. S. Flag, 54x72 inches, No. 2 silk, gold leaf or silk embroidered stars, gold colored silk bullion fringe, silk cord and tassels, staff, gilt spear head, belt and cover	42 00
No. F-148.	U. S. Flag, 54x72 inches, No. 2 silk, gold leaf or silk embroidered stars, gilt bullion fringe, gilt cord and tassels, staff, eagle, belt and cover, complete	45 00
No. F-149.	U. S. Flag, 4½x6 feet, No. 3 silk, gold leaf or silk embroidered stars, gold fringe and tassels, jointed staff, eagle, belt and cover	63 00
No. F-150.	U. S. Flag, 54x72 inches, No. 3 silk, gold colored silk fringe, cord and tassels, staff, spear head, belt and cover, complete	52 00
No. F-151.	U. S. Flag, 4½x7 feet, No. 3 silk, gold leaf or silk embroidered stars, gold bullion fringe and tassels, jointed staff, eagle, belt and cover	67 00
No. F-152.	U. S. Flag, same as No. F-151, but 6x8 feet	95 00

The above prices of Flags are exclusive of inscription. Gold Leaf or Embroidered Lettering, both sides of flag, per letter, 25 cents; one side, per letter, 15 cents. Lettering on Bunting Flags—painted, 15 cents per letter.

Lettering reads, on obverse side, from the staff. On reverse side, in reverse from staff, unless otherwise ordered.

BUNTING FLAGS, MOUNTED.

No. F-155.	U. S. Bunting Flag, 6x6½ feet, regulation size, staff, spear head, silk bullion fringe, silk cord and tassels and belt	20 00
No. F-156.	U. S. Bunting Flag, 6x6½ feet, worsted fringe cord and tassels, staff, spear head and belt	18 00

These Prices Subject to Cash Discount.

BUNTING U. S. FLAGS.

Made of Standard Bunting, turned and double stitched seams, 44 white muslin sewed stars, with Grommets ready for hoisting. War-rauted fast colors.

3x2 feet	\$1 60	10x5 feet	\$6 50	22x11 "	24 80
4x2½ "	2 60	10x6 "	8 00	22x14 "	30 00
5x3 "	2 70	12x6 "	9 00	24x12 feet	\$28 50
6x3 "	3 70	12x8 "	10 45	24x15 "	34 00
6x4 "	3 80	15x7½ "	12 00	25x12½ "	30 50
6x6½ "	6 00	15x8 "	13 50	25x15 "	35 50
7x3½ "	4 00	15x10 "	15 50	28x14 "	38 00
7x4 "	4 75	18x9 "	17 00	28x16 "	42 00
8x4 "	5 20	18x10 "	19 00	30x15 "	42 50
8x5 "	5 50	18x12 "	21 75	30x20 "	50 80
9x4½ "	5 50	20x10 "	20 50	36x18 "	56 00
9x6 "	6 75	20x12 "	23 50	40x20 "	66 50

Flags of All Nations, in Buntings and Silks, Burgees, Jacks, Flys, Penants and Signals. Give dimensions desired and write for estimates.

EMBROIDERED FLAGS.

United States, State, or for Company, of special design. Estimates on application.

U. S. DYED SILK FLAGS.

	Not Mounted.	Mounted.
12x18 inches	\$ 40	\$ 65
16x24 inches	55	85
24x36 inches	1 10	1 60
30x48 inches	2 00	3 00

PRINTED MUSLIN FLAGS.

On Sticks.

No.	Inches.	Price.	No.	Inches.	Price
1.	2½x3, per gross	\$ 35	7½.	15x23, per dozen	50
2.	3x4½, "	40	8.	20x28, "	90
3.	4x6, "	65	9.	23x36, "	1 40
4.	5x8, "	85	10.	28x43, "	2 00
5.	6x10, per dozen	15	10½.	30x50, "	2 50
5½.	7x11, "	20	11.	35x54, "	3 00
6.	8x13, "	25	12.	40x66, "	3 25
7.	12x18, "	\$ 45			

Nos. 11 and 12 are without sticks.

These Prices Subject to Cash Discount.

ASSORTED NATIONS FLAGS.

Muslin, on Sticks. Thirty-Six Nations.

Set of 12 different Nations, 15x23 inches, per set	\$3 25
Set of 12 different Nations, 24x36 inches, per set	5 00
Full set of 36 different Nations, 15x23 inches, per set	9 75
Full set of 36 different Nations, 24x36 inches, per set	15 00

AMERICAN SHIELDS.

On Card Board, 26x38 inches, doz.	\$2 50
---	--------

COAT OF ARMS OF EVERY STATE IN THE UNION.

There are correct representations of State Seals, printed in colors, on muslin and on card board.

22x26 inches, on muslin, each	\$ 40
25x38 inches, on card board, each	40

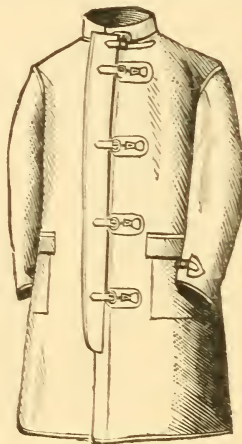
TRI-COLOR DRAPERY.

Red, white and blue with star border, per yard	\$ 15
Plain colors, red, white and blue, per yard	12

FESTOONINGS.

Paper, in 10 yard lengths, per yard	\$ 07
---	-------

RUBBER FIRE SERVICE COAT.



Especial care is taken in the making of our Fire Service Rubber Coats. We do not use the common stock rubber goods. Each coat is guaranteed satisfactory in every respect.

These Prices Subject to Cash Discount.

No. F-150. Standard Rubber Fire Service Coat, black or dull finish on extra heavy drill, length from 48 to 49 inches, made with a double fly (rubber inside and out), impossible for water to pass in, closed by 4 black enameled metal patent automatic spring snaps, 2½ inch standing collar, with adjusting strap and buckle to draw collar close to the neck, adjusting strap and buckle at end of each sleeve, no outside pockets, one inside pocket.

List Price.

No. F-150. Single-coated, extra quality, black or dull finish . . . \$ 5 85

No. F-151. Double-coated, " " " " " " . . . 6 25

Painting company name, or initials and number on back of coat, 30 to 75 cents extra.

OFFICERS' WHITE RUBBER COATS.

List Price.

No. F-152. Same pattern as above, extra quality, white, single-coated . . . \$ 9 25

No. F-153. Same pattern as above, extra quality, white, double-coated . . . 11 50

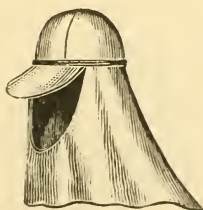
SCALE OF SIZES.

Size No.	3	4	5	6	7
Chest Measure,	36	38	40	42	44
Sleeve Length,	32	32½	33½	34	35
Length Coat,	48	48	49	49	49

Rubber Service Coats should fit loosely.

Rubber Service coats of extra length made to order, \$1 extra.

RUBBER CAPS.



No. F-155.

No. F-155. Black Rubber Skull Cap, with Cape, each . . . \$ 75

These Prices Subject to Cash Discount.

RUBBER GLOVES.

- No. F-157. Pipemen's Rubber Gloves, with gauntlets, per pair . \$2 50
 No. F-157½. Without gauntlets 2 00

THE FIREMAN'S "STORM KING" BOOTS.

The Best Fireman's Boot Made.



No. F-159.

"I would heartily recommend it."

CAPT. E. F. MARTIN, Engine 7, Boston.

- No. F-159. The large legs, which make it possible to get into the boots without a second's delay, and the tops, which can be drawn up and strapped tightly about the leg, make a combination in a rubber boot which is very valuable to a fireman. The ordinary fireman's short boot can be put on quickly, but is often not enough protection to the legs, especially when kneeling. The Fireman's Storm King, however, coming up a little above the knee, is a protection at all times. Net, per pair . . \$5 00

BUTTONS.



No. F-160.



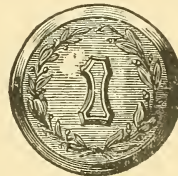
No. F-161.



No. F-162.



No. F-163



No. F-164.

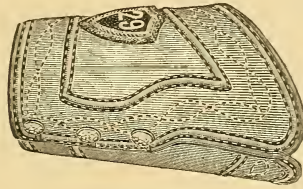
No. F-160.	Vest or cap size, nickel or gold plated, 1st quality, doz.	50
	Per gross	2 25
	Second quality, doz.	15
	Per gross	1 35
No. F-161.	Coat size, nickel or gold plated, 1st quality, doz.	50
	Per gross	4 50
	Second quality, doz.	30
	Per gross	2 25
No. F-162.	Overcoat size, nickel or gold plated, 1st quality, doz.	60
	Per gross	5 25
	Second quality, doz.	40
	Per gross	3 00
No. F-163.	Hook and Ladder (1), nickel or gilt, coat size, doz.	50
	Vest size, doz.	25
No. F-164.	Button with wreath and figure 1, nickel or gilt, coat size, per doz.	50
	Vest size, per doz.	25



Special Buttons.—Designs and prices will be cheerfully furnished upon application.

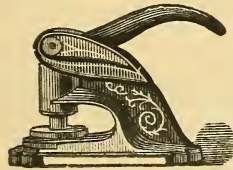
These Prices Subject to Cash Discount.

CUFFS.



Cuffs of enameled leather, per pair \$1 50 to \$4 00

SEALS.



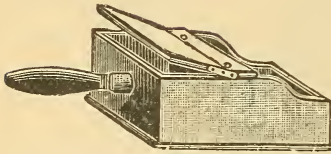
The only perfect Press manufactured. Guaranteed to be the best.
Made by us in our Own Shops, at Columbus, Ohio.



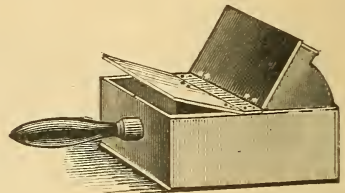
- No. F-176. Seal. On first-class lever press, small size, lettering only, no device in centre \$4 50
- No. F-177. Seal. Same as Seal No. F-176, but with any ordinary device 5 50
- No. F-178. Seal. On large press, lettering only, no device 5 50
- No. F-179. Seal. Same as Seal No. F-178, but with any ordinary device, the "STANDARD," 6 50

These Prices Subject to Cash Discount.

BALLOT BOXES.



SEMI-SECRET.



SECRET.

- | | | |
|------------|---|--------|
| No. F-180. | Semi-secret Ballot Boxes, of walnut, as shown above, each | \$1 00 |
| No. F-181. | Semi-secret Ballot Boxes, of walnut, good finish, as shown by illustration above, each | 1 40 |
| No. F-182. | Semi-secret Ballot Boxes, of walnut, gilt and ebonized lines, very handsome, as shown by illustration above, each | 1 65 |
| No. F-183. | Secret Ballot Boxes, made of walnut, as shown by illustration above, each | 2 65 |
| No. F-184. | Secret Ballot Boxes, of walnut, finely finished, as shown by illustration above, each | 3 75 |
| No. F-185. | Secret Ballot Boxes, solid rosewood, as shown by illustration above, each | 6 10 |

BALLOTS.

- | | | |
|------------|---|--------|
| No. F-186. | Ballots, made of china, white and black, for use in semi-secret ballot boxes, per hundred | \$0 70 |
| No. F-187. | Ballots, made of wood, round (white) and cube (black) for use in secret ballot boxes, per hundred | 1 10 |

GAVELS.



- | | | |
|------------|---|--------|
| | | EACH. |
| No. F-188. | Gavel. Made of antique oak | \$0 25 |
| No. F-189. | Gavel. Made of walnut | 25 |
| No. F-190. | Gavel. Made of polished walnut | 30 |
| No. F-191. | Gavel. Made of polished rosewood | 60 |
| No. F-192. | Gavel. Made of polished ebony | 1 00 |
| No. F-193. | Gavel. Made of ivory, 2½x1½ inches, for presentation, | 4 50 |
| No. F-194. | Gavel. Made of ivory, 2¾x1¾ inches, for presentation, | 5 50 |
| No. F-195. | Gavel. Made of ivory, 2¾x1¾ inches, for presentation, | 8 00 |

These Prices Subject to Cash Discount.

GILT AND SILVER LACES.



F-200. EXACT WIDTH.

	Per Yd.
1 L. Gilt or Silver Soutache Braid, common	\$0 03
Fine	08



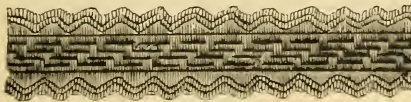
F-201. EXACT WIDTH.

1½ L. Gilt or Silver Soutache Braid, common	04
Fine	10



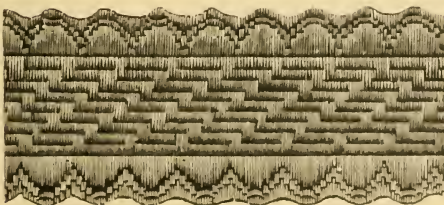
F-202. EXACT WIDTH.

2 L. Gilt or Silver Soutache Braid, common	06
Fine	16



F-203. EXACT WIDTH.

2035, 6 L. Gilt or Silver Lace, common	10
Fine	22



F-204. EXACT WIDTH.

2035, 12 L. Gilt or Silver Lace, common	16
Fine	40

These Prices Subject to Cash Discount.



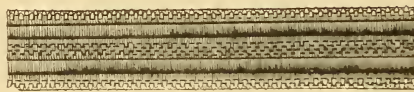
F-205. EXACT WIDTH.

1962, 1½ L. Gilt or Silver wire Lace 20



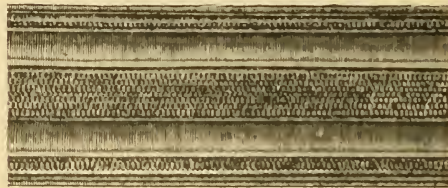
F-206. EXACT WIDTH.

3 L. Wire. Gilt or Silver Wire Lace 21



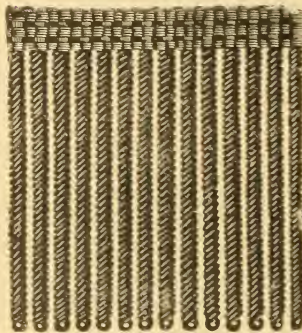
F-207. EXACT WIDTH.

6 L. Wire. Gilt or Silver Wire Lace 38



F-208. EXACT WIDTH.

12 L. Wire. Gilt or Silver Wire Lace 77



Bullion Fringe, gilt or silver, 1 inch, per yard		32
" " " 1½ " " "	1½	38
" " " 2 " " "	2	46
" " " 2½ " " "	2½	60
" " " 3 " " "	3	76
		90

Gilt and Silver Tassels, 1 to 6 inches, from 10 ets. to \$4 per pair.

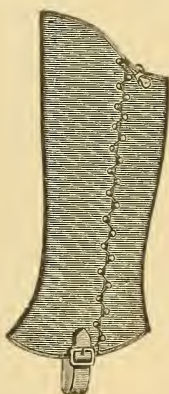
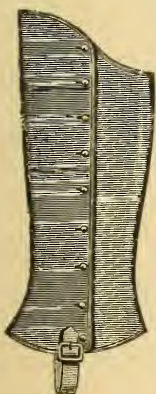
These Prices Subject to Cash Discount.

PLUMES.



Plumes made of ostrich, swan, vulture or coque feathers, horse hair, buffalo or yak hair, all colors and styles. Prices from \$1 to \$6.

LEGGINS.



Add greatly to a company's appearance when marching. We make them of white or brown canvas, black grain or enamel leather, with buttons, straps and buckles, patent lace or steel side springs. Prices, from 65 cents to \$5 per pair.

FIREMEN'S TACTICS.

No. F-228. THE FIREMAN'S BOOK OF TACTICS AND "SCHOOL OF A COMPANY," profusely illustrated, embracing a very large number of new display movements, street movements, fancy movements, emblematical movements, etc., together with several beautiful drills outlined for prize and exhibition drills for firemen, and silent drills for the stage. Rules and regulations for prize drills, how to conduct a company at funerals, how to receive a visiting company, etc. It contains hundreds of new fancy movements never before published. No company should be without it. All orders promptly filled upon receipt of net price, single copy \$1 50
 Net, five copies or more 1 25

These Prices Subject to Cash Discount.

PARLIAMENTARY LAWS.

- No. F-229. THE NEW COMPENDIUM AND QUESTION BOOK OF PARLIAMENTARY LAW, by L. C. Bethel. It is just what you want for ready reference and quick use in any meeting.
 Net price 40

CAP CORDS.



U. S. REGULATION CAP CORD.



CAP CORD WITH LOOPS.

- No. F-210. U. S. Regulation fine gilt Cap Cord, each \$0 50
 No. F-211. U. S. Regulation real gold Cap Cord, each 1 25
 No. F-212. Gilt Cap Cord, with loops, doz 1 50
 No. F-213. Fine Gilt Cord, with loops, doz 3 00
 No. F-214. Fine Gilt Wire Cap Cords, doz 2 75
 No. F-215. Fine Gilt Heavy Wire Cap Cord, doz 3 25
 No. F-216. Mohair Cap Cords, any color, doz 90
 No. F-217. Silk Cap Cords, any color, doz 1 25

HAT CORDS.



DOUBLE HAT CORDS.

- No. F-218. Hat Cords, gilt and black, with acorn ends, doz . . . \$2 60
 No. F-219. Hat Cords, gilt and black, acorn ends, doz 7 00
 No. F-220. Hat Cords, fine heavy gilt and black, with acorn ends, each 2 50
 No. F-221. Hat Cord, double gilt, with acorn ends, doz 3 75
 No. F-222. Hat Cord, fine gilt, with acorn ends, doz 13 25
 No. F-223. Hat Cord, fine heavy gilt, with acorn ends, each . . 1 50



SINGLE HAT CORDS.

- No. F-225. Hat Cords, gilt and black, single, doz \$1 50
 No. F-226. Single gilt Hat Cord, doz 2 75

These Prices Subject to Cash Discount.

LAPEL BUTTONS.



F-230.

FRONT, IN COLORS.



SIDE VIEW.



F-232.

Every company should have a special design Lapel Button, to designate its active, honorary and exempt members. Makes a handsome souvenir for State Conventions and Tournaments, and is suitable for all occasions. Made in any color silk, woven in colors, or gold or silver embossed design and lettering.

- No. F-230. Lapel Button, embossed in gold or silver, special design for your own Company, per 100, net. \$10 00
 - No. F-231. Lapel Button, woven in silk, special design, per 1000, net. 35 00
 - No. F-232. The handsomest Lapel Button made. Guaranteed 12 karat gold face, with fine enamel in colors, each, net. 35
- Samples sent upon application. Special prices on large quantities.

SPECIAL COMPANY BADGE.

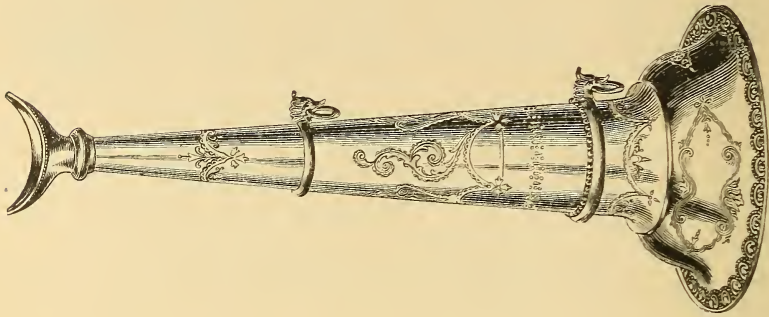


No. F-235. EXACT SIZE.

- No. F-235. Our new design Badge, of special pattern. The handsomest Badge on the market for the price. Exact size of illustration. Name and number of company on pin bar. Guaranteed satisfactory in every respect. Heavily silver plated, each, net. \$1 00
 - In lots of 25 or more, each, net. 75
- Extra fine quality silk ribbon attached, 10 cents extra. (See pages 65 to 80 for other styles metal badges.)

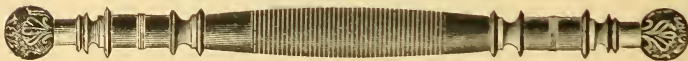
These Prices Subject to Cash Discount.

DUTY AND FANCY TRUMPETS.



- No. F-236½. Duty Trumpet, Octagon, heavy brass, with 3 solid bands, 17 inch brass \$ 3 75
- No. F-237½. Nickel plated 5 25
- No. F-238½. 19 inch brass 4 25
- No. F-239½. Nickel plated 5 75
- Fancy Trumpet, white metal, silver plated, gold lined mouth, bell handsomely engraved, 18 inch 20 00
- 20 inch 25 00
- 22 inch 30 00
- Cord and Tassels from \$1 25 to \$3 50 extra.
- Satin^lined Cases for Trumpets, from \$6 00 to \$10 00.

MARSHALS' BATON.

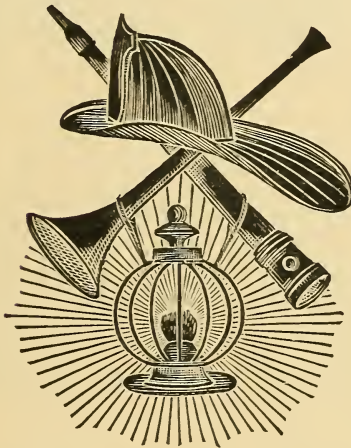


- No. F-236. Baton. Black walnut, holly ends, each \$1 10
- No. F-237. Baton. Black walnut, gilt metal acorn ends 2 00
- No. F-238. Baton. Rosewood, gilt metal acorn ends 2 50
- No. F-239. Baton. Rosewood, gilt engraved ends. See illustration, 3 25

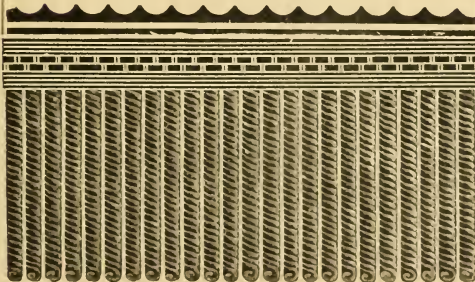
These Prices Subject to Cash Discount.

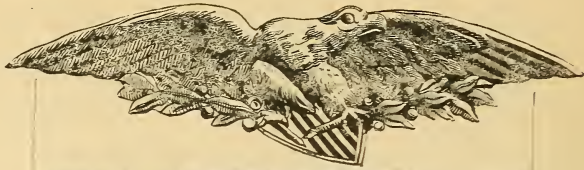


**SPRINGDALE
HOSE CO.**



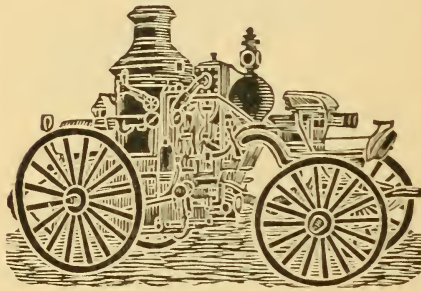
**BUTLER,
PENNA.**





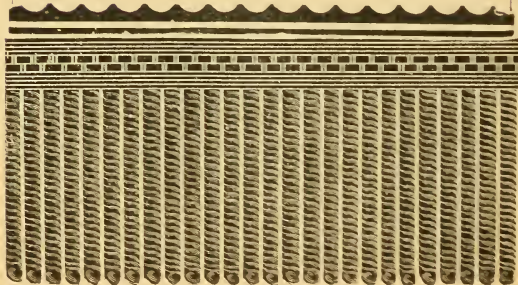
HOLGATE

FIRE DEP'T



STEAMER

No. 1





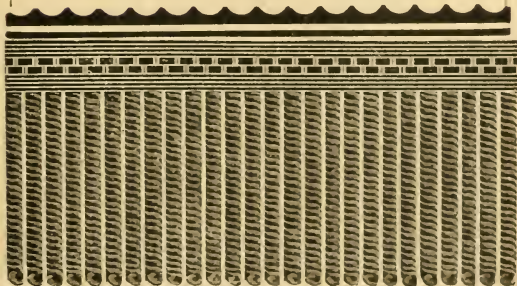
M. C. LILLEY

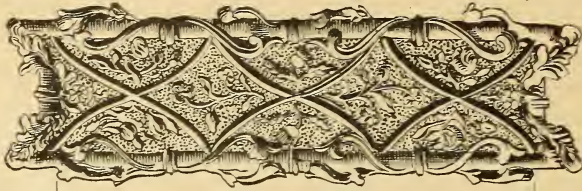
FIRE DEP'T

HOOK AND LADDER

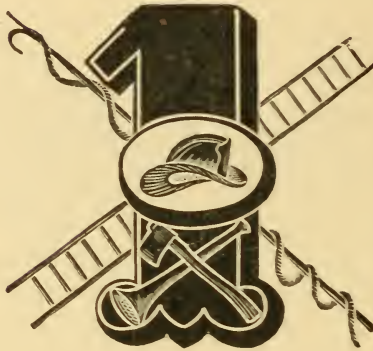
COLUMBUS,

OHIO

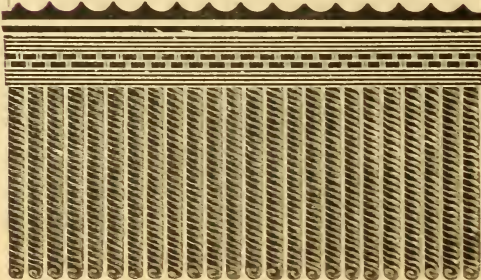


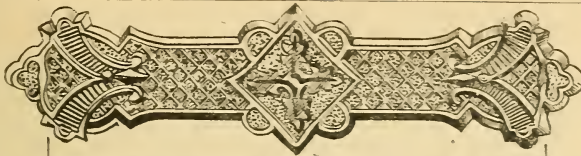


**GOODWILL
COMPANY**

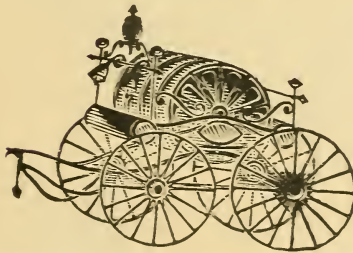


**ALTOONA,
PENNA.**

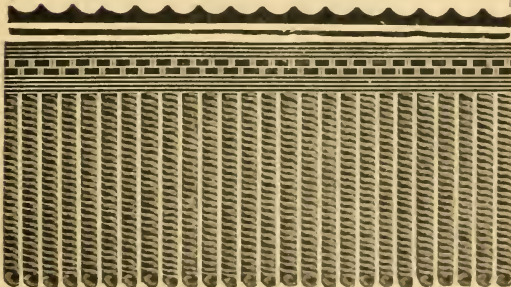




CITY
HOSE CO.
No. 2



CEDAR FALLS,
IOWA.





F. D. DESIGN F.

RIBBON BADGES.

The accompanying illustrations show a few designs of Firemen's Badges. The F. D. emblem on center of badges illustrated will be furnished on any style of badge wanted.

We will cheerfully submit samples of our ribbon badges, when ordered by proper officers of the company. Our badges are all of the finest silk ribbons, and can be had in any shade of color wanted. The embossing is done in either gold or silver (aluminum), at same prices. As we manufacture badges of every possible description, we can furnish anything wanted in the badge line. Write us and specify your wishes. Untrimmed badges, 8c to 20c each.

Special prices on badges in large quantities.

- No. F-250. Badge. Of any color silk ribbon, 2x7 inches, gilt embossed design and lettering. Gilt metal hanger at top with pin fastener, 1½ inch gold bullion fringe at bottom, per dozen . . . \$3 00
- No. F-251. Badge. Of any color silk ribbon, 2½x7 inches, gilt embossed design and lettering, fancy gilt metal pin bar at top with pin fastener, 2 inch gold bullion fringe at bottom, per dozen 4 00
- No. F-252. Badge. Of any color silk ribbon, 2½x7 inches, gilt embossed design and lettering, fancy gilt metal pin bar at top and pair of gold bullion tassels, 2 inch gold bullion fringe at bottom, per dozen 5 50
- No. F-253. Badge. Made of extra quality silk ribbon, 2½x7 inches, fancy gold plated metal pin bar at top, handsomely embossed lettering and design, fancy gold and silver mixed bullion fringe at bottom, per dozen 8 00

We make fine embroidered bullion badges of silk velvet, with hand embroidered lettering and design, and will cheerfully submit prices, etc., upon application.

COMBINATION REVERSIBLE PARADE AND FUNERAL BADGES.

Since introducing this style of badge it has become more popular every day. The front is made of any color ribbon, with design and lettering gold embossed, and with gold bullion fringe on bottom, and is intended for dress parade, balls, entertainments, etc. The reverse side is made of black silk ribbon, intended for funeral purposes only, the design and lettering in silver, and with silver bullion fringe on bottom. Handsome gold plated pin hanger, which is of our own make, and is not patented, so you pay no royalty, etc.

- No. F-252½. Price, each \$0 65
- No. F-253½. Combination Reversible Parade and Funeral Badge of finest quality, complete, each 1 00

COMMITTEE BADGES.

We make Committee Badges in many handsome designs, at prices ranging from 10 cents to \$1 50 each.

CERTIFICATES OF MEMBERSHIP.

Handsomely lithographed in colors. Blank space for name of member, name and number of Company, etc.

No. F-256.	For Active Members, each.	\$ 0 75
	25 or more.	60
No. F-257.	For Honorary Members.	75
	25 or more.	60
No. F-258.	For Exempt Members.	75
	25 or more.	60

RUNNING TEAMS' OUTFITS.

No. F-259.	Cap, of any color flannel, small vizer, unlined, each	\$0 70 to \$ 1 00
No. F-260.	Running Shoes, leather or rubber soles, per pair . . .	2 50
No. F-261.	Shirts, one-fourth sleeve, worsted, any color, best grade, each	3 50
No. F-262.	Shirts, second quality, colors, blue, white or garnet, each.	2 50
No. F-263.	Knee Tights, worsted, any color, best grade, pair . .	3 00
No. F-264.	Knee Tights, second quality, colors blue, white or garnet, pair	2 00

WATERPROOF LEATHER BLACKING.

S. & H. Harris's world-renowned preparation for harness, carriages, etc. Military Waterproof Pouch Blacking.



This Blacking is much used and highly esteemed for cleaning Harness, Straps, Belts and all Black Leather Articles, as it is perfectly waterproof.

No. F-265.	Small Boxes.	\$ 0 25
	Per dozen.	2 50
No. F-266.	Large Boxes.	50
	Per dozen.	5 00

For any supplies wanted, not found in this Catalogue, write us, and we guarantee the lowest market price.



No. F-301.

Gold . . \$20 00 Silver . . \$8 00



No. F-302.

Gold . . \$20 00 Silver . . \$8 00



No. F-300.

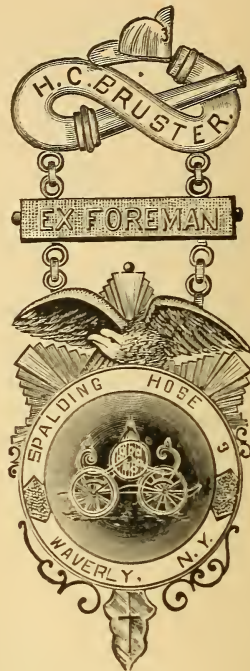
Gold, exact size of cut . . . \$60 00 Gold, two-thirds size of cut. \$45 00
 Silver, size of cut \$20 00

Prices of these Badges, Net Cash with Order.



No. F-303.

Gold \$35 00
 Silver 12 00



No. F-304.

Gold \$30 00
 Silver 10 00



No. F-305.

Gold \$ 22 50
 Silver 8 00

Prices of these Badges Net Cash with Order.



No. F-306.



No. F-307.

Gold \$30 00
 Silver 10 00

Gold \$28 00
 Silver 8 00



No. F-308.



No. F-309.

Gold \$33 00
 Silver 10 00

Gold \$30 00
 Silver 10 00

Prices of these Badges, Net Cash with Order.



No. F-310.

Gold \$25 00
 Silver 8 00



No. F-311.

Gold \$12 00
 Silver 5 00



No. F-312.

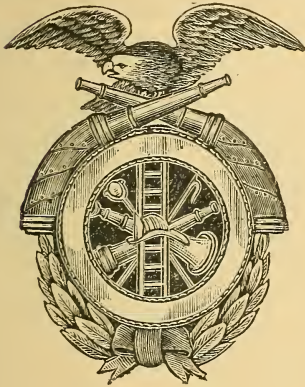
Gold \$13 50
 Silver 5 00



No. F-313.

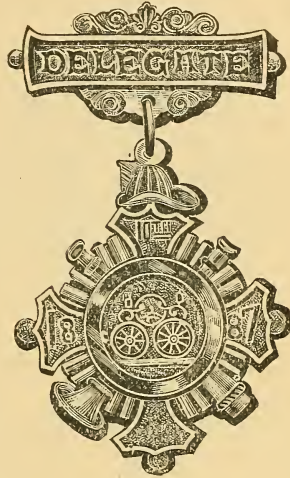
Gold \$12 00
 Silver 6 00

Prices o these Badges, Net Cash with Order.



No. F-314.

Gold \$25 00
 Silver 9 00



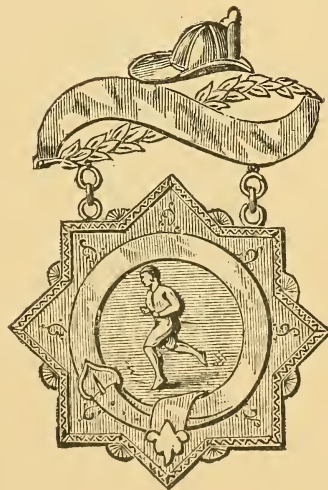
No. F-315.

Gold \$12 00
 Silver 5 00



No. F-316.

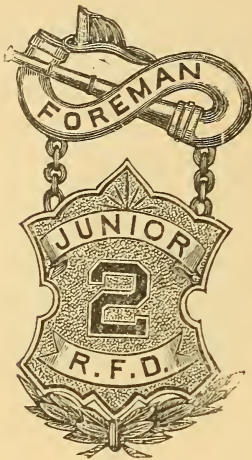
Gold \$10 00
 Silver 5 00



No. F-317.

Gold \$15 00
 Silver 6 00

Prices of these Badges, Net Cash with Order.



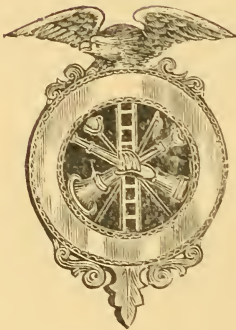
No. F-318.

Gold \$10 00
 Silver 5 00



No. F-319.

Gold \$12 00
 Silver 5 00



No. F-320.

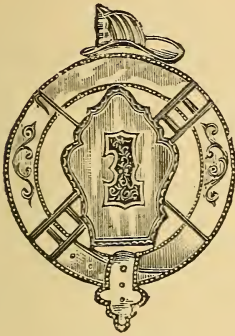
Gold \$12 00
 Silver 5 00



No. F-321.

Gold \$12 00
 Silver 5 00

Prices of these Badges, Net Cash with Order.



No. F-322.



No. F-323.

Gold \$8 00
 Silver 3 00
 Nickel 2 00

Gold \$10 00
 Silver 2 25
 Nickel 1 50



No. F-324.

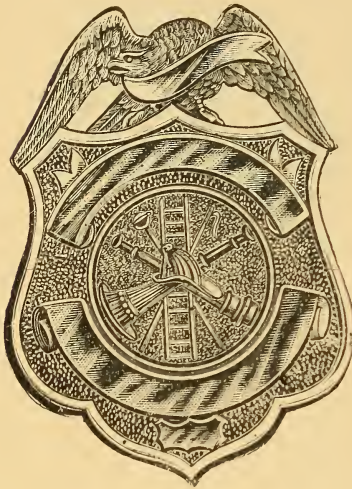


No. F-326.

Gold \$10 00
 Silver 1 75
 Nickel 1 00

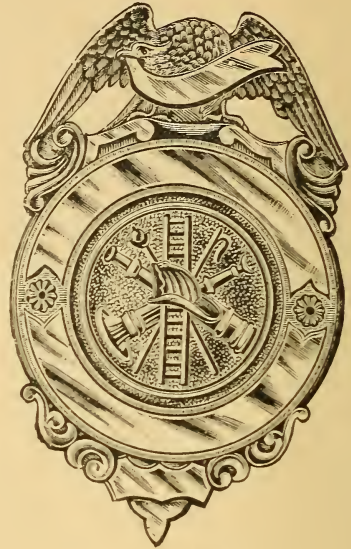
Gold \$8 00
 Silver 3 00

Prices of these Badges, Net Cash with Order.



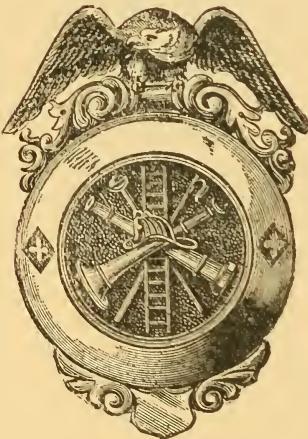
No. F-326.

Nickel	\$ 1 75
Gilt	2 00
Silver	6 00
Gold	30 00



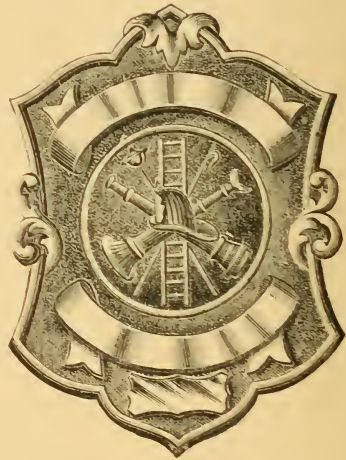
No. F-327.

Nickel	\$ 1 75
Gilt	2 00
Silver	6 00
Gold	30 00



No. F-328.

Nickel	\$ 1 00
Gilt	1 25
Silver	5 00
Gold	25 00



No. F-329.

Nickel	\$ 1 00
Gilt	1 25
Silver	5 00
Gold	25 00

Prices of these Badges, Net Cash with Order.



No. F-330.



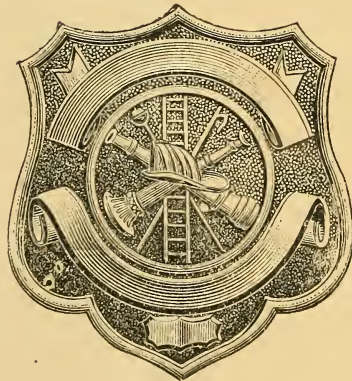
No. F-331.

Nickel \$1 00
 Gilt 1 25

Nickel \$ 75
 Gilt 1 00



No. F-332.



No. F-333.

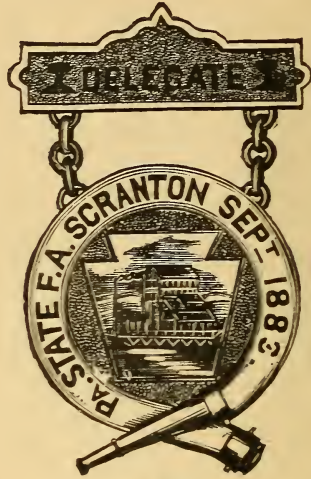
Nickel \$ 75
 Gilt 1 00

Nickel \$1 50
 Gilt 1 75

Prices of these Badges, Net Cash with Order.



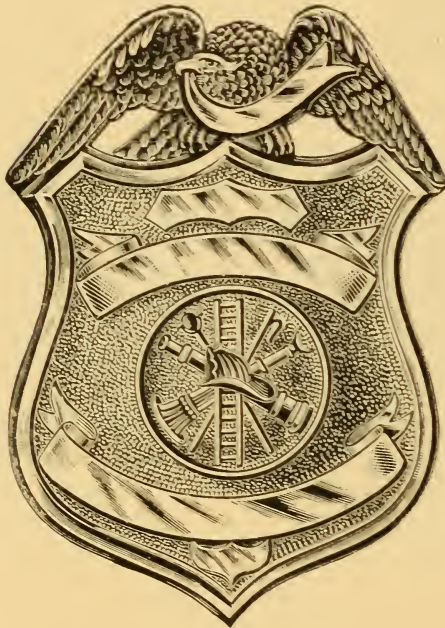
No. F-334.



No. F-335.

Nickel \$1 50
 Gilt 2 00

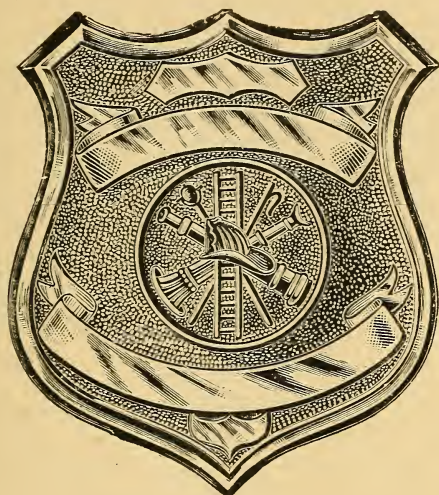
Nickel \$1 50
 Gilt 2 00



No. F-336.

Nickel \$2 00 Gilt \$2 50
 Silver 8 00 Gold 40 00

Prices of these Badges. Net Cash with Order.



No. F-337.

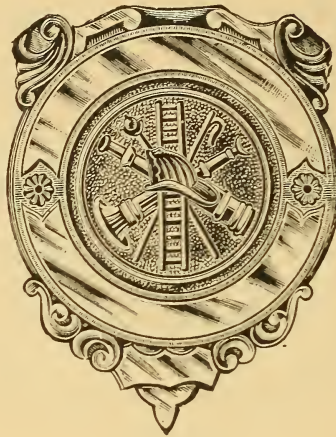
Nickel \$1 75 . . Gilt \$2 00



No. F-338.

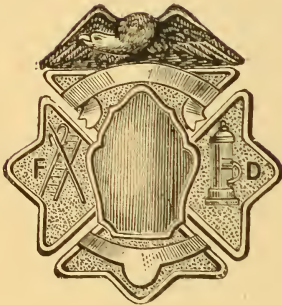
Nickel \$ 75 . . Gilt \$1 00

Prices of these Badges, Net Cash with Order.



No. F-329.

Nickel \$1 50 . . . Gilt \$1 75



No. F-330.

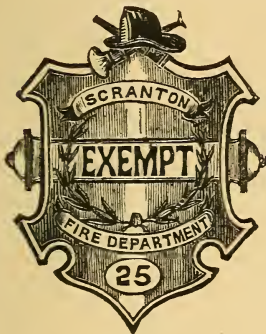


No. F-341.

Nickel \$0 60
 Gilt 75

Nickel \$0 75
 Gilt 1 00

Prices of these Badges, Net Cash with Order.



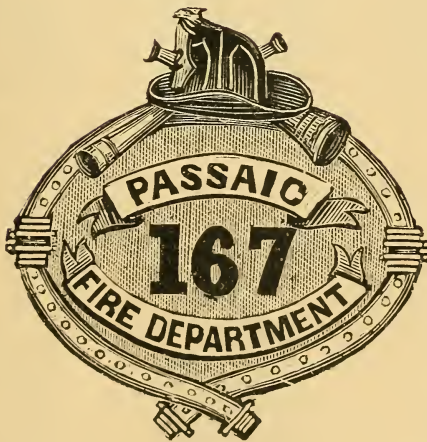
No. F-342.



No. F-343.

Nickel \$0 60
 Gilt 75

Nickel \$0 75
 Gilt 1 00



No. F-344.

Nickel \$0 60 . . Gilt \$0 75

Prices of these Badges, Net Cash with Order.



No. F-345.

Gold \$5 00
Silver 2 00



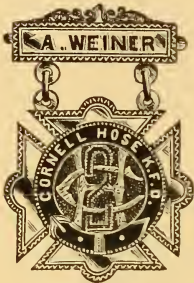
No. F-346.

Gold \$5 00
Silver 1 50
Nickel 1 00



No. F-347

Gold \$5 00
Silver 2 00
Nickel 1 25



No. F-348.

Gold \$5 50
Silver 2 50



No. F-349.

Gold \$6 00
Silver 1 75
Nickel 1 25



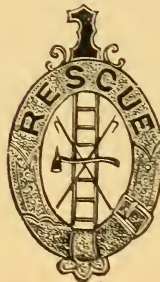
No. F-350.

Gold \$4 00
Silver 1 75
Nickel 1 25



No. F-351.

Gold \$4 00
Silver 1 75
Nickel 1 25



No. F-352.

Gold \$4 00
Silver 1 75
Nickel 1 25



No. F-353.

Gold \$4 00
Silver 1 50
Nickel 1 00

Prices of these Badges, Net Cash with Order.



No. F-354.

Gold \$5 00
 Silver 1 50
 Nickel 1 25



No. F-355.

Gold \$3 50
 Silver 1 50
 Nickel 1 00



No. F-356.

Gold \$3 00
 Silver 1 25
 Nickel 1 00



No. F-357.

Gold \$2 50
 Silver 1 25
 Nickel 75



No. F-358.

Gold \$2 50
 Silver 1 50
 Nickel 1 00



No. F-359.

Gold \$1 00



No. F-360.

Gold \$2 50
 Silver 1 25



No. F-361.

Gold \$3 00
 Silver 1 50

Prices of these Badges, Net Cash with Order.



No. F-362.

Gold \$1 25



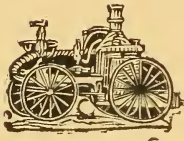
No. F-363.

Gold \$1 50



No. F-364.

Gold \$1 00



No. F-365.

Gold \$1 00



No. F-366.

Gold \$1 25



No. F-367.

Gold \$1 50



No. F-368.

Gold \$1 00



No. F-369.

Gold \$5 00



No. F-370.

Gold \$0 50

Prices of these Pins, Net Cash with Order.

IF YOU ARE A MEMBER OF

ANY ORGANIZATION

IN NEED OF

Uniforms, Equipments,

BANNERS,

FLAGS,

EMBROIDERY,

LODGE SUPPLIES,

REGALIA,

ROBES,

FURNITURE,

BADGES, or

Supplies of Any Description

Write Us for Catalogue and Prices.

ALWAYS ADDRESS

THE M. C. LILLEY & CO.,

COLUMBUS, OHIO.

THE LARGEST BUILDINGS IN THE WORLD DEVOTED EXCLUSIVELY TO THE MANUFACTURE OF
FIREMEN'S, MILITARY, BAND AND SECRET SOCIETY UNIFORMS AND SUPPLIES.



BUILT, OWNED AND OCCUPIED EXCLUSIVELY BY
THE M. C. LILLEY & CO., Columbus, Ohio.

LIBRARY OF CONGRESS
0 014 080 197 5